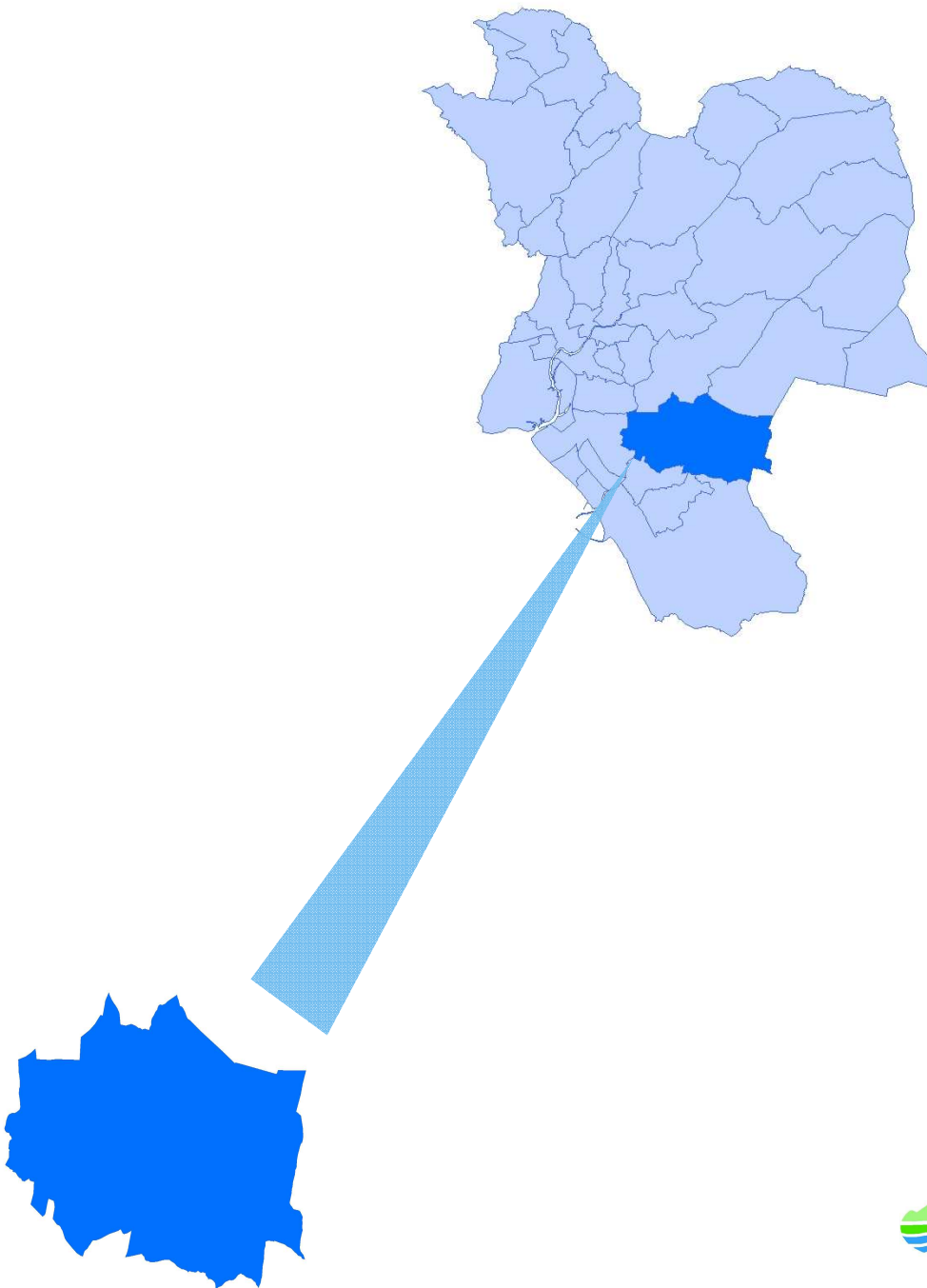


Neath Port Talbot County Borough Council

**Neighbourhood Profile for
Bryn & Cwmavon Ward**



Neath Port Talbot
Castell-nedd Port Talbot
County Borough Council Cyngor Bwrdeistref Sirol

Introduction

This profile covers the Bryn and Cwmavon ward and provides a general overview of the main characteristics of Bryn and Cwmavon. The profile is based upon the latest statistical information available to the Council.

Information has come from a range of sources including the 2001 Census and the 2008 Welsh Index of Multiple Deprivation (WIMD.) The profile also compares the situation in Bryn and Cwmavon in relation to the rest of the County Borough. All averages mentioned are the Neath Port Talbot average unless otherwise stated.

This neighbourhood profile focuses on the following key areas:

- **Population**
- **Ethnicity profile**
- **Health and housing**
- **Employment**
- **Welsh language**
- **Education**
- **Transport**
- **Poverty and deprivation**

Key Statistics

As of 2001 unless otherwise stated

Area (hectares)	2,316 hectares
Perimeter	25628 metres
Population	6,516
Density (number of persons per hectare)	2.81 people per hectare
Households	2,778 households
% male	48%
% female	52%
British Multi Ethnic % population	0.2%
% population under 16	20.5%
% of population over 60	22.2%
Average age	39.8 years
Life expectancy (2003)	76.3 years
Housing	68.4% owner occupied
Unemployment	4%
Good Health / Bad health	3,885 people / 1,053 people
Population with limiting long term illness	30.3%
% of population with no qualifications	46.4%
Number of infant, junior and primary school children registered (2005/6)	431 pupils
Free school meal entitlement (2005/6)	83 pupils (19%)
Welsh language skills	1,550 people either speak read or write Welsh

General

- The ward of Bryn and Cwmavon lies to the west of Maesteg in Bridgend County.
- Bryn and Cwmavon is located in the Afan Valley, and the River Afan flows through the village of Cwmavon.
- The ward is surrounded by forested mountains, the biggest being 'Foel Fynyddau' which stands 370m high and lies on the northern edge of the village of Cwmavon.

Key issues

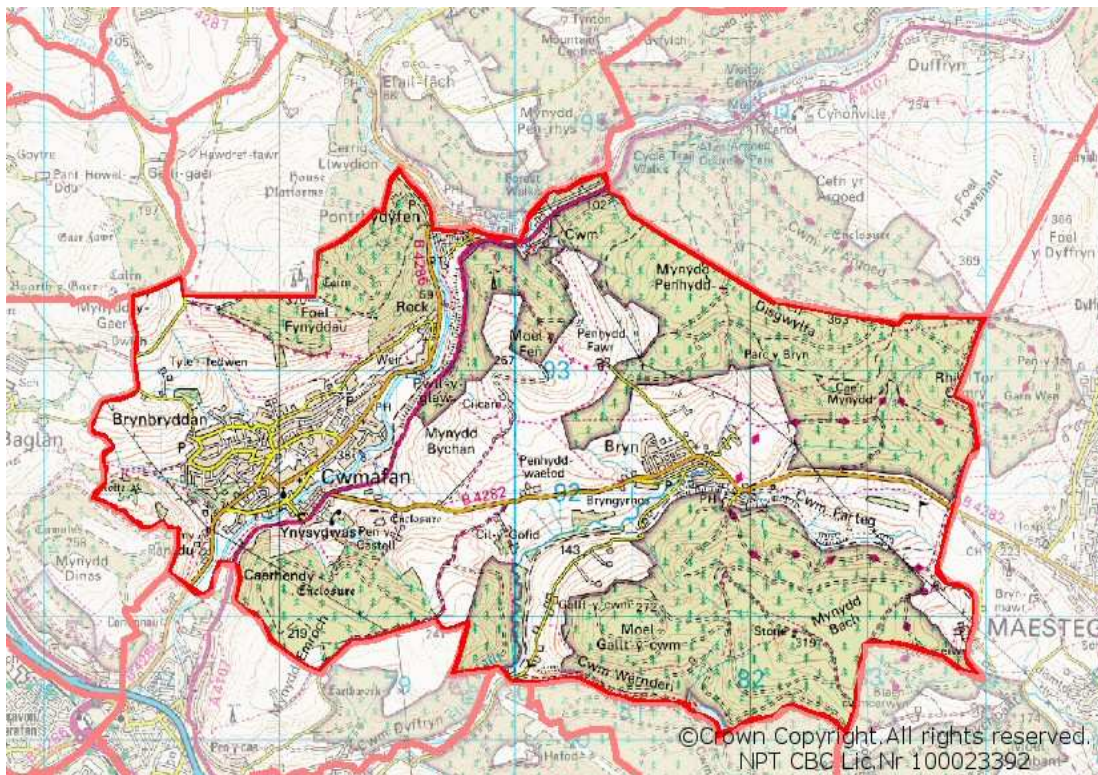
- There are small areas within Bryn and Cwmavon ward that suffer from poverty and deprivation. Overall, there are areas in Bryn and Cwmavon that are in the top 25% most deprived in the whole of Wales. Within the ward, there is severe deprivation in terms of income, employment, health and education.
- On the other hand, there are pockets of Bryn and Cwmavon that suffer the least deprivation especially in terms of education and housing in the whole of Wales.
- The ethnic profile of Bryn and Cwmavon reveals that the population is predominantly white at 99.2% of the population and that there are very few ethnic groups within the ward.
- The 2001 Census found that the most popular industry to work in for Bryn and Cwmavon residents was manufacturing. Over 25% of residents worked in Manufacturing compared to 21.8% in Neath Port Talbot.
- Just under 45% of Bryn and Cwmavon residents owned one car or van compared to the Neath Port Talbot average of 47%. However, 29.7% of residents did not own a car and 22% had two cars or vans.

Population

The resident population of Bryn and Cwmavon, as measured in the 2001 Census, is 6,516 of which 48 per cent are male and 52 per cent are female. The resident population of Neath Port Talbot is 134,468, of which 48 per cent are male and 52 per cent are female.

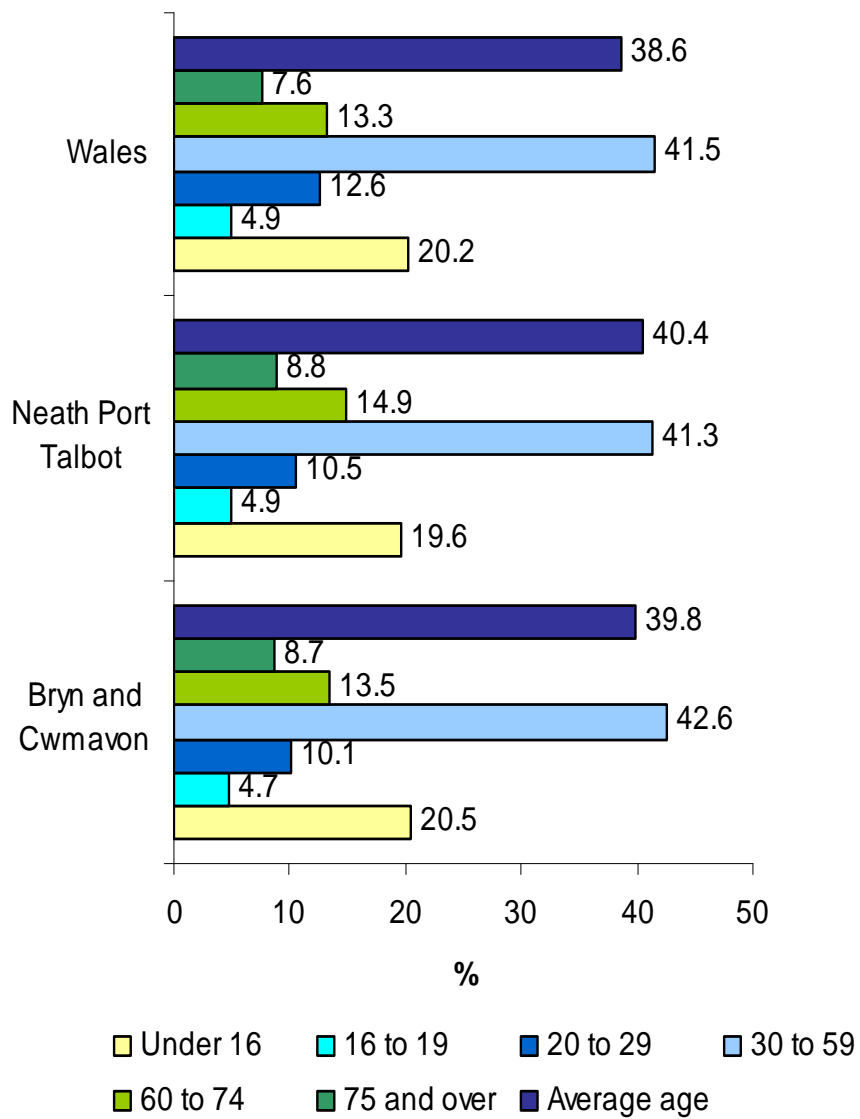
The age range of the population of Bryn and Cwmavon largely mirrors that of the age range of Neath Port Talbot as a whole. The average age of residents of Bryn and Cwmavon is 39.8 years, while the average age in Neath Port Talbot is 40.4. The largest age range in Bryn and Cwmavon is persons aged between 30 and 59 years old, who make up 42.6 per cent of the population.

According to the 2001 Census, there are a total number of 2,778 households in Bryn and Cwmavon compared to 57,609 households in Neath Port Talbot. Of the 2,778 households, 8 per cent contained lone parent households with dependent children, which is above the Neath Port Talbot average of 7.9 per cent.



Age profile of Bryn and Cwmavon, Neath Port Talbot & Wales (ONS, Census 2001)

Fig 1.1 Percentage of age groups and average age in years



Ethnicity Profile

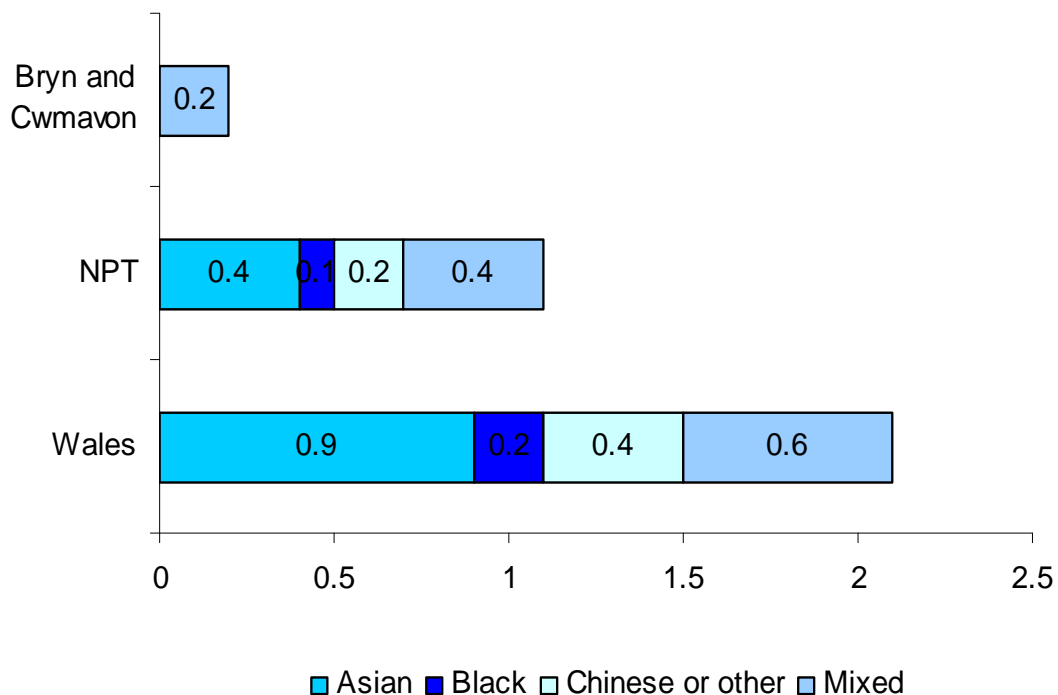
At the last Census, the ethnic make up of Bryn and Cwmavon illustrated that like much of Neath Port Talbot as a whole, Black and Multi Ethnic groups are very much in the minority. There were very few British Multi Ethnic groups in Bryn and Cwmavon.

In Bryn and Cwmavon 99.8 per cent of the population recognised themselves as white, 0.27 per cent of which are white Irish. This represents an even less prevalence of ethnic groups than the Neath Port Talbot figure of 98.9 per cent and 97.9 per cent in Wales.

There are no Black, Asian or Chinese or other groups in Bryn and Cwmavon ward, but 0.2 per cent of the population are from mixed groups.

Profile of Minority Ethnic Communities in Bryn and Cwmavon (ONS, Census 2001)

Fig 2.1 Percentage of ethnic groups



Health

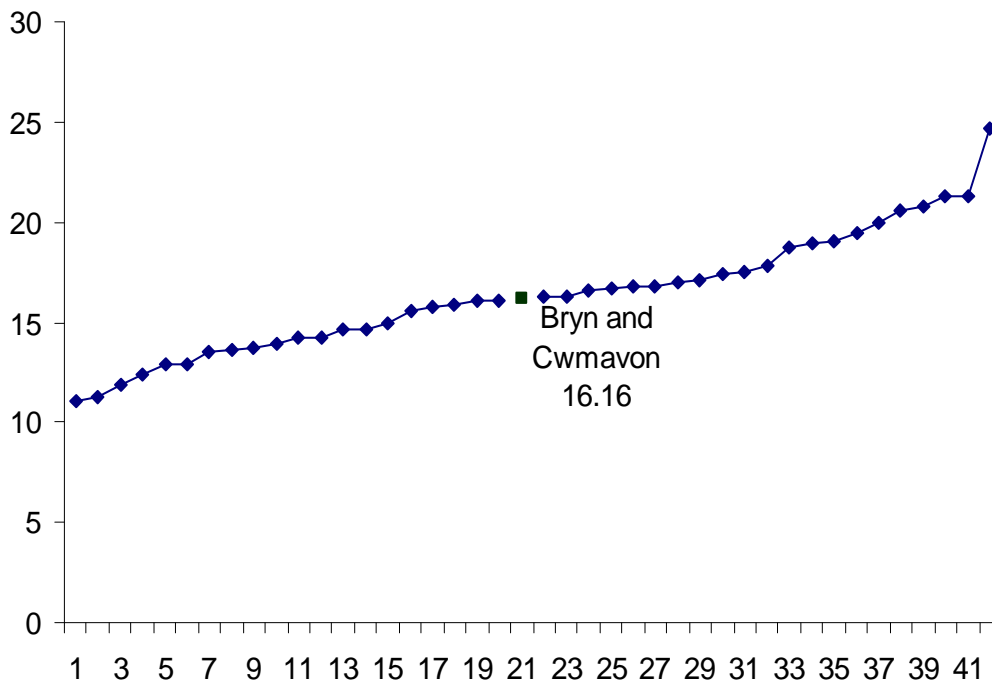
The chart below shows the percentage of each ward in Neath Port Talbot not in good health, which is illustrated by a blue diamond for each ward. Bryn and Cwmavon, illustrated with a green square, have 16.1 per cent of its population in bad health.

According to the 2001 Census, 30.3 per cent of the population of Bryn and Cwmavon believe they have a limiting long-term illness, which is higher than the Neath Port Talbot average of 29.4 per cent, and significantly higher than the England and Wales average of 18.2 per cent.

A similar pattern occurred when asked to describe their health over the preceding 12 months. 59.6 per cent of the population of Bryn and Cwmavon believe they have good health, while 24.2 per cent and 16.16 per cent believe their health is fairly good and not good respectively.

Population not in good health (%) by ward (ONS, Census 2001)

Fig 3.1 Percentage of population who are not in good health by Neath Port Talbot ward.



For the first time, the 2001 Census asked about voluntary care provided to help or support family and friends because of disability, physical or mental ill health and old age. 15.2 per cent of the population of Bryn and Cwmavon provide unpaid care to others, which is above the Neath Port Talbot average of 14.1 per cent and significantly above the England and Wales average of 10 per cent.

According to the Office for National Statistics, life expectancy at birth for all persons from 1999 to 2003 in Bryn and Cwmavon is 76.3 years. The Office for National Statistics have categorised every ward in England and Wales into five quintiles. The first quintile having the highest life expectancy and the fifth quintile having the lowest life expectancy. Bryn and Cwmavon ward is in the fifth quintile.

Housing and households (ONS, Census 2001)

In Bryn and Cwmavon there were 2,778 households in 2001. 99 per cent of the resident population lived in households. The total number of households in Neath Port Talbot was 57,609.

Fig 3.2 Household type by percentage

	Bryn and Cwmavon	Neath Port Talbot	England and Wales
One person households	29.6	30.3	30
Pensioners living alone	16.3	16.4	14.4
Other Pensioner households	9.1	10.1	9.4
Contained dependent children	31.6	30	29.5
Lone parent household with dependent children	8	7.9	6.5
Owner occupied	68.4	71.3	68.9
Rented from Council	21.7	16.6	13.2
Rented from Housing Association or Registered Social Landlord	3	3.7	6
Private rented or lived rent free	6.9	8.4	11.9

Housing and deprivation (ONS, Census 2001)

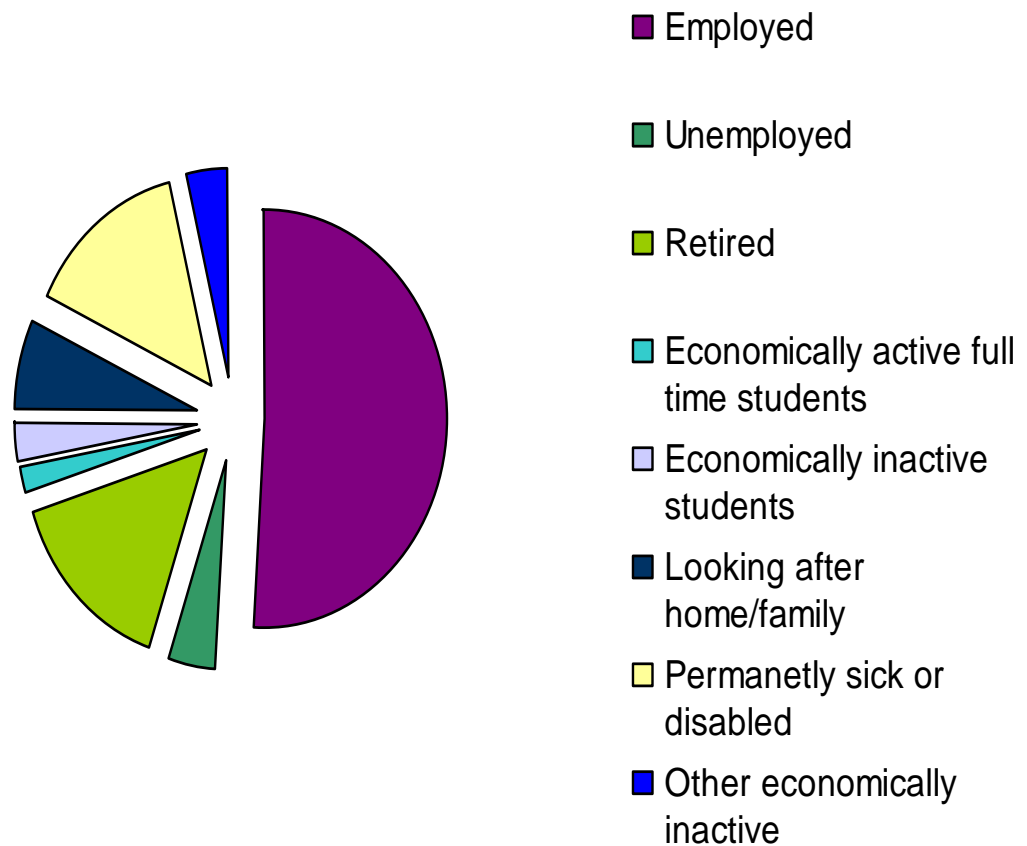
Fig 3.3 Percentage of population with or without amenities

	Bryn and Cwmavon	Neath Port Talbot	England and Wales
Without central heating	2.8	4	8.
Without sole use of a bath, shower or toilet	0.3	0.4	0.5
Have no car or van	29.7	30.2	26.8
Have 2 or more cars	25.6	23.2	29.4
Average household size (number)	2.3	2.3	2.4
Average number of rooms per household (number)	5.6	5.5	5.3

Employment

Employment and unemployment in Bryn and Cwmavon (ONS, Census 2001)

Fig 4.1 Pie chart of economic activity and unemployment



According to the 2001 census, 51 percent of the population of Bryn and Cwmavon are employed, while 4 per cent of the population are unemployed.

Unemployment is slightly higher than the Neath Port Talbot average of 3.9 per cent, while 50.6 per cent of the Neath Port Talbot population are employed.

Economic activity in Neath Port Talbot and England and Wales (ONS, Census 2001)

Fig 4.2 Percentages of economic activity and unemployment

The table below highlights the percentage of the population's economic activity. Figures taken from the 2001 census can be compared with the Bryn and Cwmavon ward, Neath Port Talbot and England and Wales.

	Bryn and Cwmavon	Neath Port Talbot	England & Wales
Employed	51	50.6	60.6
Unemployed	4	3.9	3.4
Economically active full time students	1.7	1.7	2.6
Retired	15.2	15.6	13.6
Economically inactive students	3.1	3.6	4.7
Looking after home/family	6.9	6.8	6.5
Permanently sick or disabled	14.5	13.6	5.5
Other economically inactive	3.7	4.2	3.1

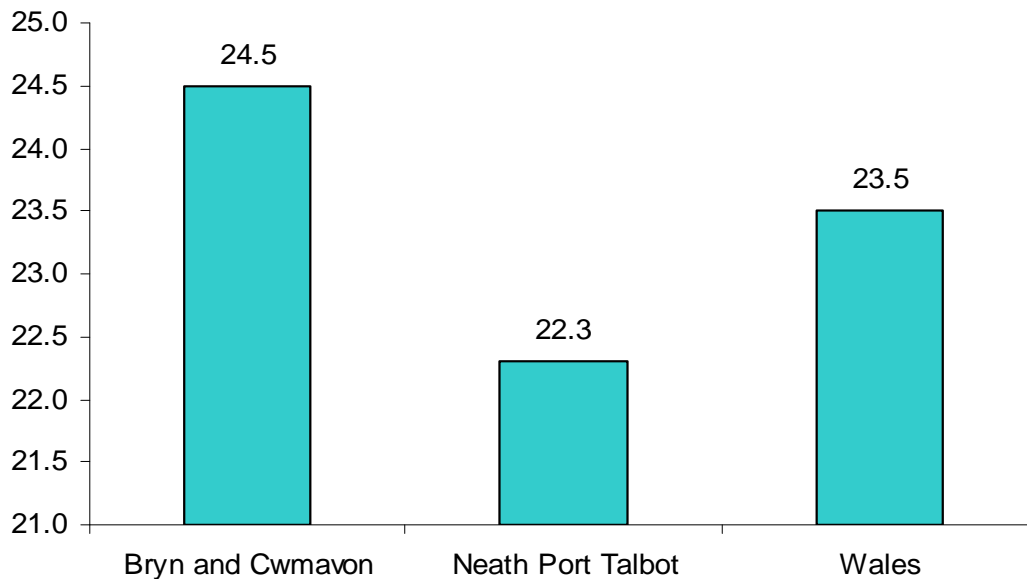
Within Bryn and Cwmavon, 15 per cent of those unemployed are 50 years old and over, 5 per cent have never worked and 35 per cent are long term unemployed.

According to the Department of Work and Pensions, in August 2000 there were 2,175 Jobseeker Allowance claimants in Neath Port Talbot of which 27 per cent had child dependants. Jobseekers Allowance is payable to people under pensionable age who are available for, and actively seeking, work of at least 40 hours per week. Figures provided are those only claiming income based job seekers allowance. Furthermore, there are 12,980 Income Support Claims in Neath Port Talbot, 3 per cent are under the age of 20.

Welsh Language Skills

Ability to either speak, read or write Welsh (ONS, Census 2001)

Fig 6.1 Percentage of population that can either speak, read or write in Welsh



A total of 1,550 people over the age of 3 years old can speak, read or write Welsh. This equates to 24.5 per cent of the total population of Bryn and Cwmavon over the age of 3 years old. The percentage of people who have any of the skills in Bryn and Cwmavon is higher than the Neath Port Talbot average of 22.3 per cent as a whole.

Bryn and Cwmavon also has the fifteenth lowest number of residents out of the 42 wards who are aged over 3 years old with no knowledge of Welsh, with only 67.3 per cent of residents with no knowledge.

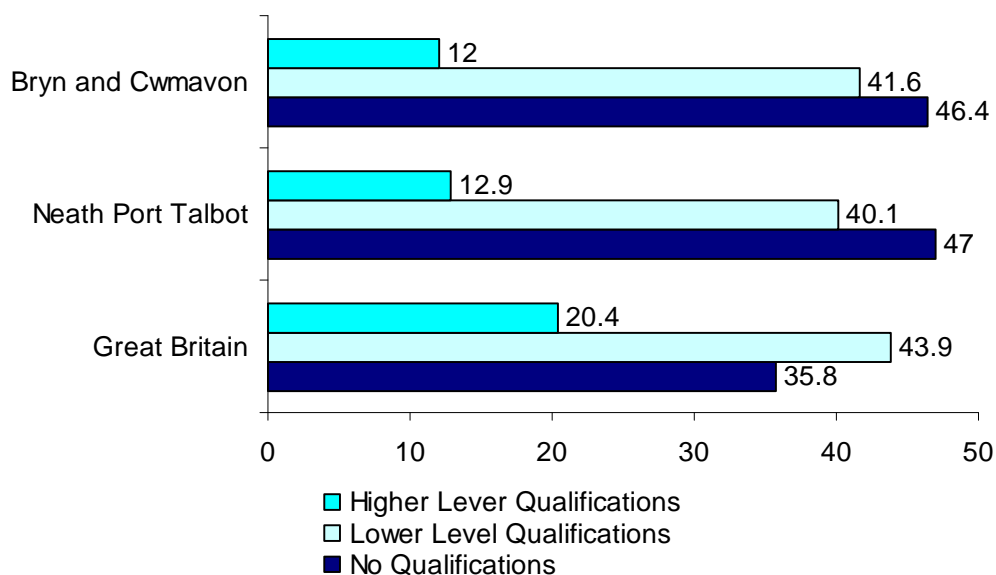
5 pupils (0.98 per cent) attending the primary school in Bryn and Cwmavon speak Welsh at home.

Education

Of the 431 children registered at the primary, infant and junior school in this ward, 83 (19 per cent) are entitled to free school meals. Attendance at the primary school is currently 92.2 per cent, which is slightly above the Neath Port Talbot average of 92%

Lower and higher qualifications (ONS, Census 2001)

Fig 7.1 Percentage of population that have no qualifications, lower qualifications and higher qualifications.



The chart above shows that 46.4 per cent of Bryn and Cwmavon residents have no qualifications, which is lower than the Neath Port Talbot figure of 47 per cent and higher than the Great Britain figure of 35.8 per cent.

The term lower level qualification refers to qualifications including GCSEs, O levels, A levels and NVQ levels 1-3. Bryn and Cwmavon ward has 41.6 per cent of its population with lower level qualifications, which is above the Neath Port Talbot figure of 40.1 per cent.

The term higher level qualification refers to qualifications including first degrees, higher degrees, NVQ levels 4 and 5, HND, HNC and certain professional qualifications. Bryn and Cwmavon ward has 12 per cent with

this qualification, which is below the Neath Port Talbot figure of 12.9 per cent.

Transport

Method of travel to work (ONS, Census 2001)

Fig 8.1 Mode of transport to work by percentage

	Bryn and Cwmavon	Neath Port Talbot	Wales
Travel by car ¹	79.57	74.9	70.59
Travel by public transport ²	6.28	5.95	6.58
Travel by foot/cycle	6.24	10.99	11.79
Travel by taxi	0.37	0.52	0.51
Travel by motorcycle	1.45	1	0.75

The chart above indicates that a large number of residents in Bryn and Cwmavon travel to work by car. 79.5 per cent of residents in Bryn and Cwmavon travel by car, which is above the Neath Port Talbot and England and Wales figure.

However, according to Census data, the percentage of residents using public transport was also higher than the Neath Port Talbot average. Very few residents travel to work by foot or cycle in Bryn and Cwmavon with only 6.2 per cent of residents favouring this method of transport.

¹ Includes residents aged 16-74 who travel to work as a car passenger or car driver.

² Includes residents aged 16-74 who travel to work by light rail, train, tram, bus, mini bus or coach.

Poverty and Deprivation

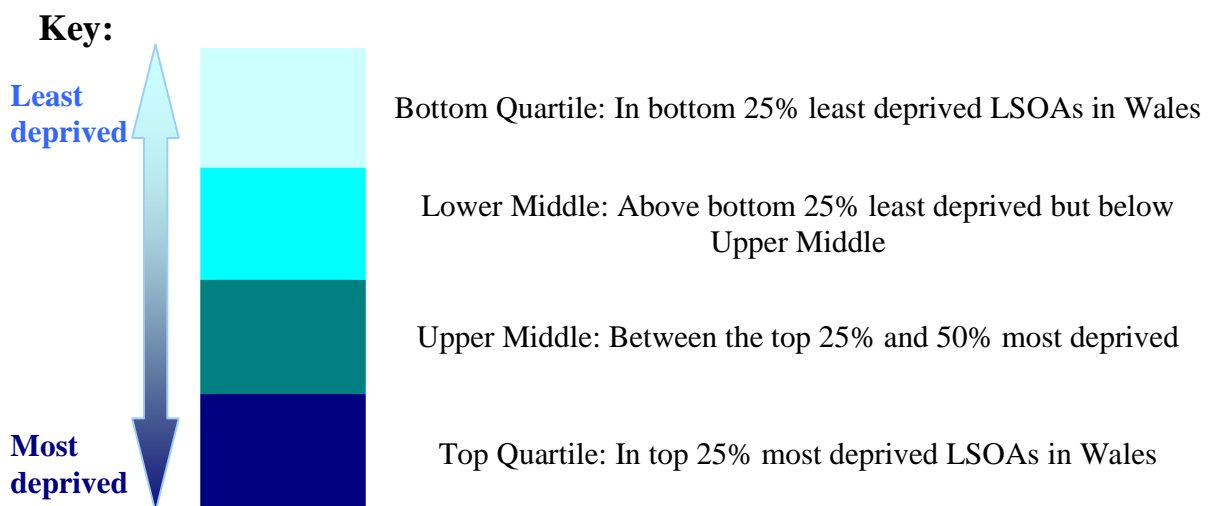
Welsh Index of Multiple Deprivation (WIMD 2008)

The Welsh Index of Multiple Deprivation 2008 (WIMD) is a national measure which combines data on income, employment, health, education, access to services, housing, physical environment and community safety. The domains can be combined to calculate an overall deprivation score.

The WIMD score has been calculated for all Welsh local authorities and for approximately 1896 lower super output areas (91 in Neath Port Talbot), which are small geographic areas within each ward. These areas are then ranked according to their WIMD score out of a total of 100, with a high score indicating relatively high levels of deprivation and a low score indicating relatively low levels of deprivation.

Bryn and Cwmavon is a relatively large ward and as such is made up of four super output area.

Using the key below, the following scores were achieved for the super output area Bryn and Cwmavon 1, Bryn and Cwmavon 2, Bryn and Cwmavon 3 and Bryn and Cwmavon 4.



Overall

Lower Super Output Area	IMD Score	Welsh Ranking (1-1896)	NPT Ranking (1-91)
Bryn and Cwmavon 1	18.8	894	61
Bryn and Cwmavon 2	10.7	1449	77
Bryn and Cwmavon 3	45.6	139	9
Bryn and Cwmavon 4	25.8	568	42

Income

Lower Super Output Area	IMD Score	Welsh Ranking (1-1896)	NPT Ranking (1-91)
Bryn and Cwmavon 1	14.8	987	66
Bryn and Cwmavon 2	6.8	1405	78
Bryn and Cwmavon 3	55.3	150	13
Bryn and Cwmavon 4	24.3	644	50

Employment

Lower Super Output Area	IMD Score	Welsh Ranking (1-1896)	NPT Ranking (1-91)
Bryn and Cwmavon 1	24.8	630	56
Bryn and Cwmavon 2	15.9	937	73
Bryn and Cwmavon 3	62.5	103	12
Bryn and Cwmavon 4	34.8	400	39

Health

Lower Super Output Area	IMD Score	Welsh Ranking (1-1896)	NPT Ranking (1-91)
Bryn and Cwmavon 1	20.7	758	56
Bryn and Cwmavon 2	8.5	1301	78
Bryn and Cwmavon 3	67.3	79	7
Bryn and Cwmavon 4	26.1	594	44

Education

Lower Super Output Area	IMD Score	Welsh Ranking (1-1896)	NPT Ranking (1-91)
Bryn and Cwmavon 1	17.5	872	56
Bryn and Cwmavon 2	7.7	1348	76
Bryn and Cwmavon 3	27.0	570	32
Bryn and Cwmavon 4	26.7	579	35

Access to Services

Lower Super Output Area	IMD Score	Welsh Ranking (1-1896)	NPT Ranking (1-91)
Bryn and Cwmavon 1	33.9	416	9
Bryn and Cwmavon 2	17.7	864	46
Bryn and Cwmavon 3	9.2	1263	64
Bryn and Cwmavon 4	28.1	543	22

Housing

Lower Super Output Area	IMD Score	Welsh Ranking (1-1896)	NPT Ranking (1-91)
Bryn and Cwmavon 1	8.9	1280	46
Bryn and Cwmavon 2	1.7	1762	85
Bryn and Cwmavon 3	20.1	779	10
Bryn and Cwmavon 4	15.8	943	21

Physical Environment

Lower Super Output Area	IMD Score	Welsh Ranking (1-1896)	NPT Ranking (1-91)
Bryn and Cwmavon 1	0.5	1854	91
Bryn and Cwmavon 2	20.4	767	34
Bryn and Cwmavon 3	29.0	520	26
Bryn and Cwmavon 4	5.8	1467	52

Community Safety

Lower Super Output Area	IMD Score	Welsh Ranking (1-1896)	NPT Ranking (1-91)
Bryn and Cwmavon 1	6.4	1429	77
Bryn and Cwmavon 2	4.8	1538	80
Bryn and Cwmavon 3	27.4	561	23
Bryn and Cwmavon 4	13.7	1035	53

Bryn and Cwmavon Ward Councillor

For further information on local members of Neath Port Talbot Council visit

[List of NPT Councillors](#)

For further information or any other ward data please contact:

Tim Thomas
Research, Analysis and Information Officer
Marketing and Communications
Environment Directorate
Neath Port Talbot County Borough Council

Tel: 01639 686588

Email: t.thomas4@npt.gov.uk

Crown copyright material is reproduced with the permission of the Controller of HMSO

