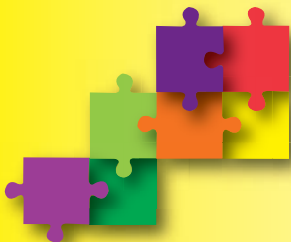




Neath Port Talbot  
Executive Summary  
Children & Young People's Plan

**2008 - 2011**

*"Putting Our Children and Young People First"*



Neath Port Talbot  
Children and Young  
People's Partnership  
Partneriaeth Plant  
a Phobl Ifanc  
Castell-nedd Port Talbot

## INTRODUCTION

The Children and Young People's Plan has been developed by the Children and Young People's Partnership. The Partnership has members from many organisations that provide services to children and young people across Neath and Port Talbot. They have come together to develop joint priorities and a joint commitment to improving the lives of children, young people and families across the county.

## WHY THIS PLAN IS SO IMPORTANT

Over the last five years the services we provide for children, young people and families have shown improvement. However the work we have done to develop this plan has shown that services can still be better. At the heart of this plan is our commitment to the United Nation's Convention on the Rights of the Child and the Welsh Assembly Government seven core aims for every child and young person. In Neath Port Talbot these are:

- Core Aim 1: A Flying Start in Life
- Core Aim 2: Opportunities to Learn
- Core Aim 3: Health, Freedom from Abuse and Exploitation
- Core Aim 4: Play, Sport, Leisure and Culture
- Core Aim 5: Participation in Decision Making
- Core Aim 6: A Safe Home, Community and Environment
- Core Aim 7: Children and Young People will not Live in Poverty

The focus of our plan for the next three years is on vulnerable children, young people and their families. Services will be aimed at those in greatest need and at the same time we will improve access to and the quality of

services everyone receives such as early years services, schools and youth support services.

## **OUR VISION**

The Children and Young People's Partnership want children and young people in Neath Port Talbot to be healthy, confident and active people who are able to be all that they want to be, live within a safe home, town or village and to have enough money coming into their homes to not have to go without.

## **WHERE ARE WE NOW**

The progress we have made in services to children and young people during the last five years include:

### **Core Aim 1: A Flying Start in Life**

There have been positive developments in services for our local children and families pre-birth and during the early years, such as:

- Better access to services everyone receives, such as health visiting
- The development of a range of additional services to support vulnerable children
- Growth in the number of childcare places for all pre-school children
- The development of three integrated children's centres
- Better parenting support services.



## **Core Aim 2: Opportunities to Learn**

There are a range of support services in place for children and young people who are not doing so well at school, such as:

- The development of the Foundation Phase curriculum
- A dedicated skills based curriculum for Key Stages 2 and 3
- Support for basic skills
- Therapy provision for children and young people who access special needs services because they have social, emotional and/or behavioural difficulties
- Additional help to make a successful move from primary to secondary school

There are also a number of programmes that support young people to stay in or enter education, employment and training.

## **Core Aim 3: Health, Freedom from Abuse and Exploitation**

Local children and young people are helped by a number of emotional health and wellbeing services and there are services available to help with children and young people's physical health too, such as:

- A successful Healthy Schools scheme
- The Primestart physical exercise programme
- The ASSIST smoking prevention project

Also there are a range of family support services targeted at children and young people with extra needs, such as:

- A volunteering support scheme managed by the Council for Voluntary Services which recruits, supports and trains volunteers to work with vulnerable children and young people
- Route 16 which gives advice and help to Looked after Children and Care Leavers
- Women's Aid Projects that help victims of domestic abuse.

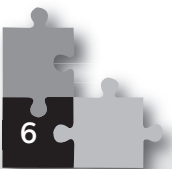
## **Core Aim 4: Play, Sport, Leisure and Culture**

There are a lot of opportunities for all children and young people to take part in play, sport, leisure and cultural activities, such as:

- Play provision that includes summer play schemes and play for children with disabilities
- A programme to encourage young people at risk of disengagement to become more physically active by using the natural environment
- Youth support services provided by the statutory, community and voluntary sector
- Cultural services provided by the statutory, private, community and voluntary sector
- Services for disabled children and young people.

## **Core Aim 5: Participation in Decision Making**

The partnership knows that making sure children and young people have a full involvement in decision making is a real challenge. It is committed to achieving this however and to this end it has developed a participation strategy for children, young people and families. This strategy aims to



further encourage organisations to help children and young people play a role in developing the services they use. It also sets standards for organisations to achieve so that any activity is of good quality and well delivered.

## **Core Aim 6: A Safe Home, Community and Environment**

A number of local services help in providing children and young people with a safe home, community and environment, such as:

- A service specifically for young people facing homelessness
- Giving disabled facilities grants for children and young people
- Youth offending service, anti-social behaviour outreach workers, services for young people at community level and the specialist domestic violence court.

## **Core Aim 7: Children and Young People will not live in Poverty**

A big part of the work undertaken in Neath Port Talbot focuses on helping residents take advantage of employment opportunities. Support initiatives help create new jobs, such as:

- Funding existing companies to help develop their businesses to create more jobs
- Encouraging the setting up of Social Enterprises within local communities.

In addition a number of local initiatives have helped remove barriers to work by:

- Providing learning opportunities
- Providing childcare
- Developing a range of transport services.

## **WHAT WE WANT TO ACHIEVE DURING THE NEXT THREE YEARS**

### **Core Aim 1: A Flying Start in Life**

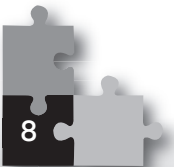
We want to make sure that every parent and child has access to:

- Good quality childcare before they start school e.g. play groups, parent and toddler groups
- Better services before a baby is born and during the birth of a baby
- Better health amongst younger children
- Services to help parents to support their children.

### **Core Aim 2: Opportunities to Learn**

We want to:

- Give support to help all children and young people get the best from their education
- Make sure that children and young people who are in care are able to gain the same level and amount of qualifications as children and young people that are not in care
- Help make sure that all young people are well prepared for when they leave school and go on to further or higher education, training and work
- Make sure that the places where children and young people go to take part in learning are well matched to their needs.



## **Core Aim 3: Health, Freedom from Abuse and Exploitation**

We want to make sure that:

- Children and young people feel very well emotionally i.e. they feel happy and confident about themselves
- They are able to improve their physical health
- The reasons for children and young people being abused or neglected are reduced
- There is a reduction in drug and alcohol misuse and domestic abuse and the effect these can have on children and young people.

## **Core Aim 4: Play, Sport, Leisure and Culture**

We want to make sure that all children and young people are able to take part in play, leisure, cultural and sporting opportunities. This means that we may have to make a special effort to encourage and help certain groups of children and young people to take part. These may include:

- Young carers
- Looked after children and young people
- Children and young people with disabilities
- Young people who are at risk of becoming involved in crime and anti-social behaviour
- Children and young people aged 8-13 years
- Young people aged between 15 and 24 who are not sufficiently active
- Girls aged 11-16 who do not take part in sport
- Children and young people from black and minority ethnic communities
- Children and young people that can't afford to take part in the opportunities that are available.

## **Core Aim 5: Participation in Decision Making**

We want to make sure that:

- Children's rights are taken seriously
- All children and young people are able to make their views heard to organisations and people who work with them.

## **Core Aim 6: A Safe Home, Community and Environment**

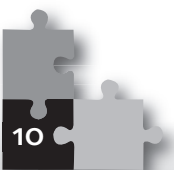
We want to:

- Reduce the numbers of young people that harm themselves and try to commit suicide
- Make sure that the houses that families and young people live in are of good quality
- Help vulnerable young people that are living independently
- Lessen the numbers of young people getting involved in crime and anti-social behaviour
- Make sure children and young people are safe in their homes and the towns and villages where they live.

## **Core Aim 7: Children and Young People will not live in Poverty**

We want to make sure:

- That families and young people are supported to easily access and make the best of training and job opportunities
- That families and young people are able to make the best use of the money they have available to them.



## **TO ACHIEVE WHAT WE WANT**

We will change our ways of working by:

- Identifying and supporting vulnerable children and young people
- Developing joined up services that are provided early in the lives of children and young people
- Improving information sharing
- Improving communication
- Jointly commissioning services that deliver the outcomes of our plan.

## **TO DEVELOP OUR WORKFORCE**

We will make sure that there are enough people working together to deliver the best possible service, in the right place and at the right time for children, young people and their families.

## **TO KNOW WHETHER WE HAVE MADE A DIFFERENCE**

This plan will be the main driver to help change and update services for children, young people and their families. We will:

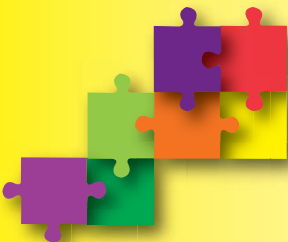
- Make regular checks to ensure that services are working well and meeting the needs of children, young people and their families;
- Decide whether changes need to be made to existing services or develop new ones to meet gaps in services
- Regularly report progress made to all that have an interest in how well we are achieving our vision for children and young people.

**For the Full Version of the Plan go to  
[www.npt.gov.uk/childrenandyoungpeople](http://www.npt.gov.uk/childrenandyoungpeople) or contact the:**

**Children and Young People's Partnership Support Unit  
Ffrwdwyllt House  
Commercial Road  
Taibach  
Port Talbot  
SA13 1PZ**

**By Telephone: 01639 873024  
By e-mail: [candypp@npt.gov.uk](mailto:candypp@npt.gov.uk)  
By Fax: 01639 873021**

**If you require this document in Welsh Language, Braille or another format please contact the Children and Young People's Partnership Support Unit.**



**Neath Port Talbot  
Children and Young  
People's Partnership  
Partneriaeth Plant  
a Phobl Ifanc  
Castell-nedd Port Talbot**