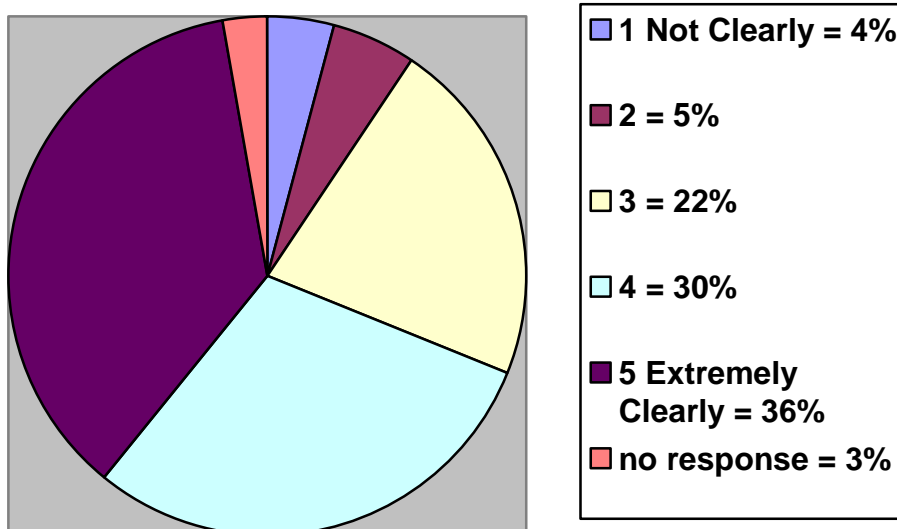
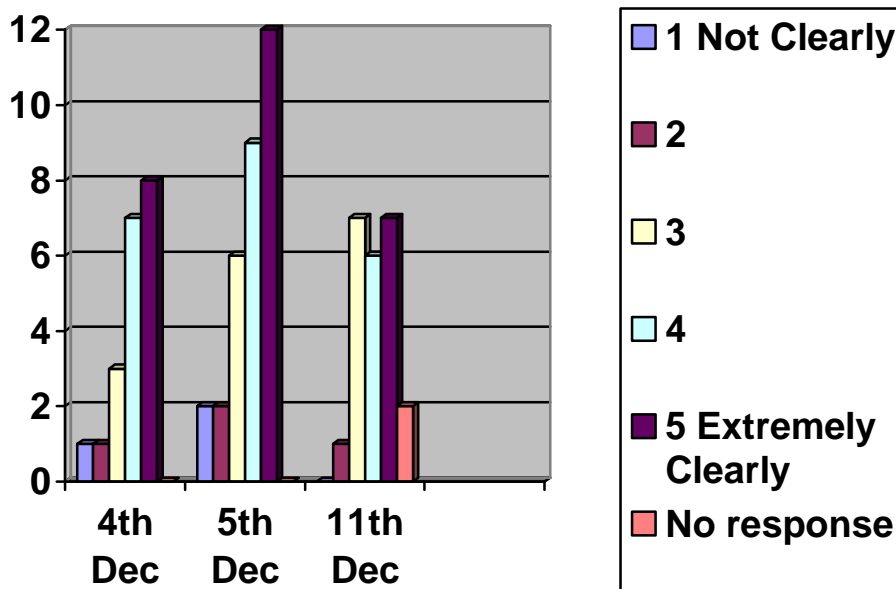


**Event Evaluation**

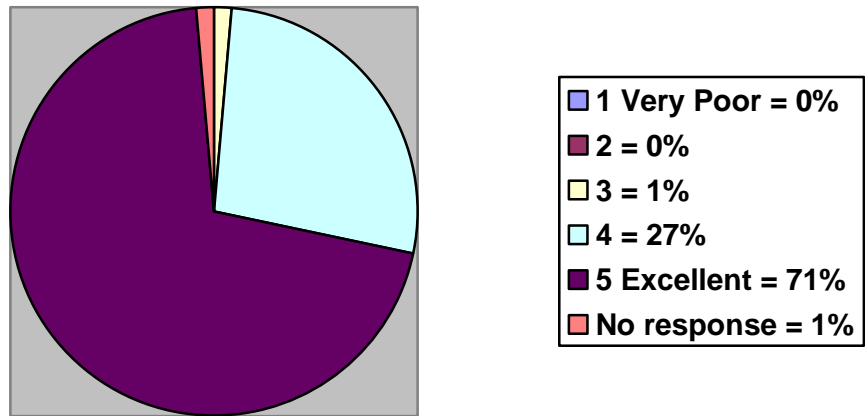
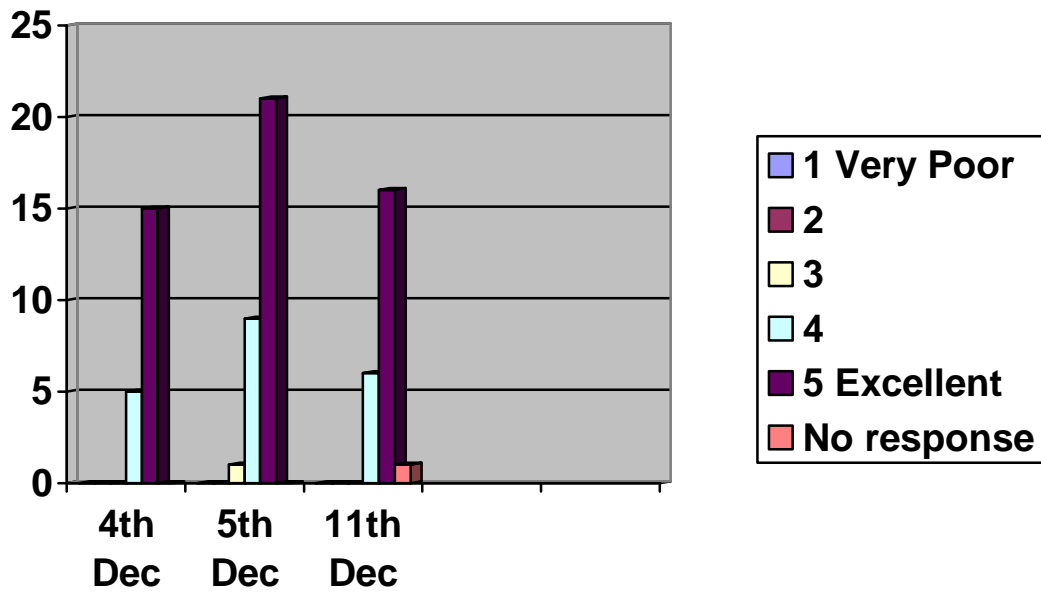
A total of 74 evaluation forms were received equating to 45% of the representatives attending the three events.

**Were the reasons for your attendance clearly explained and understood prior to the event?**



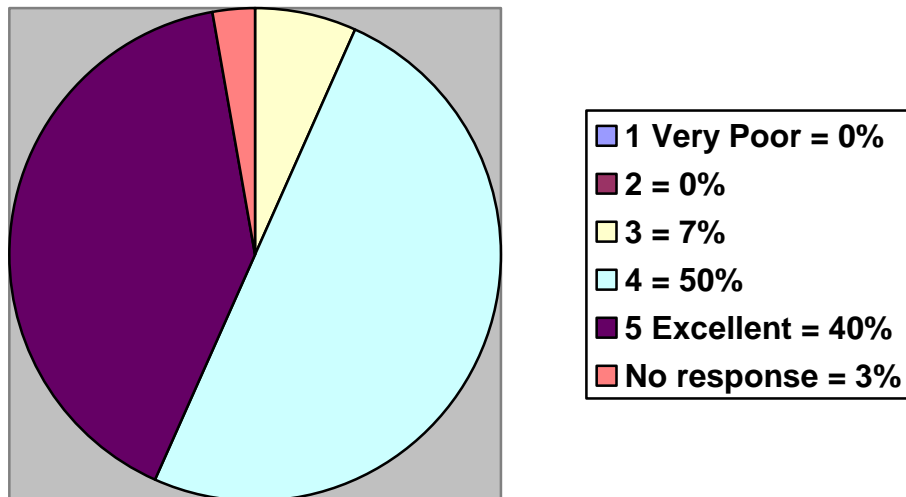
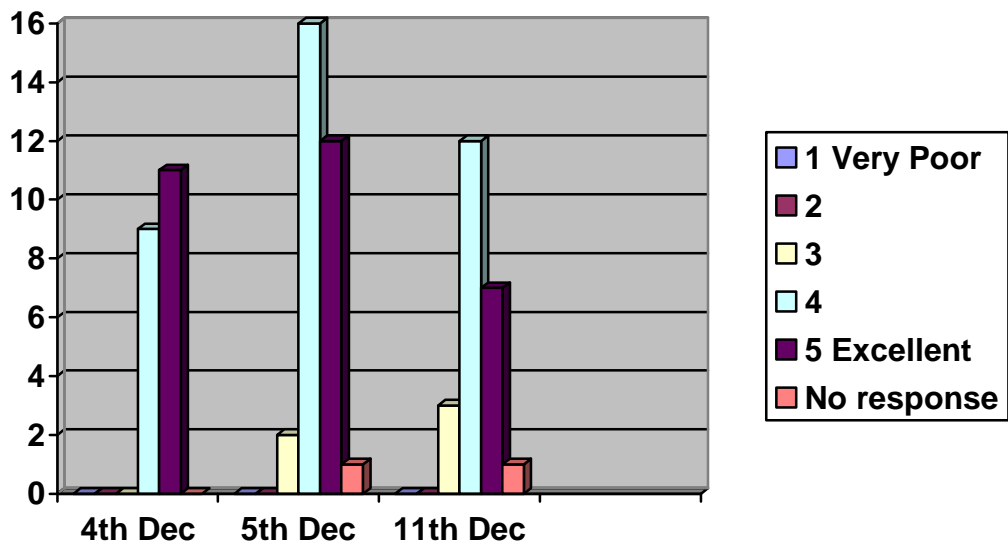
Responses indicate that at both an individual event level and overall that nearly all attendees were clear to extremely clear about the reasons for attending the event. Very few were unclear about the purpose of the event and why they should attend.

**Venue/Facilities/refreshments?**



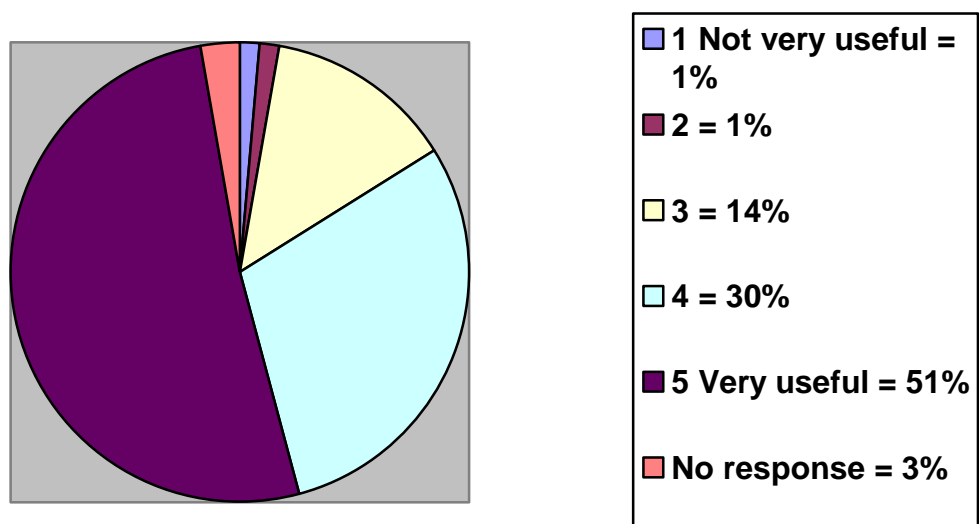
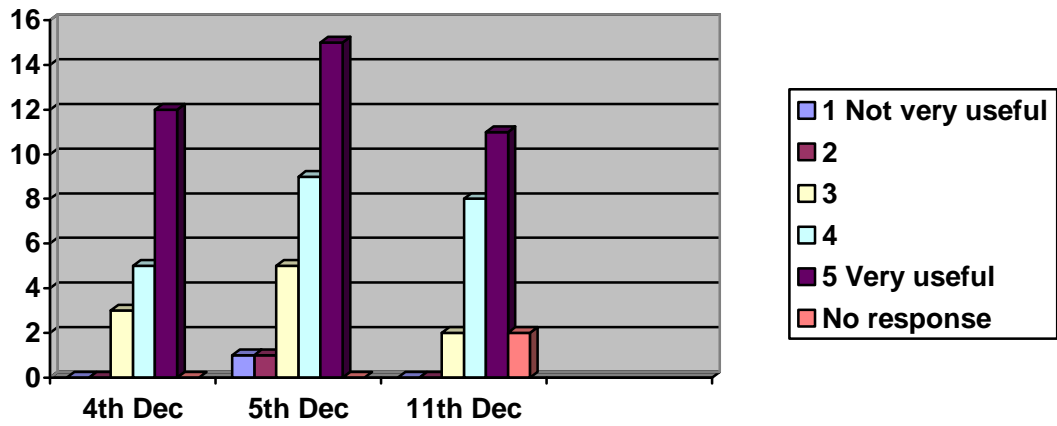
Overall attendees found the venues, facilities and refreshments to be of a high standard. 99% of respondents identified them to be good, very good or excellent i.e. 3-5. 1% did not respond to this question.

**Event Programme**



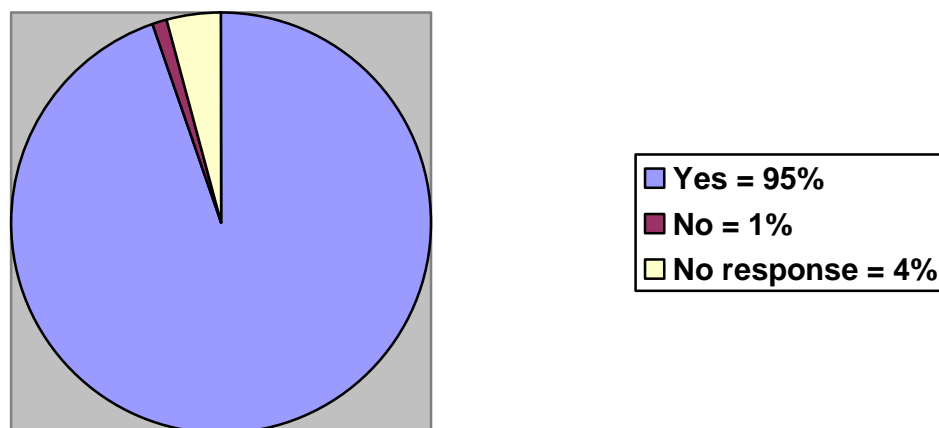
None of the attendees found the event programme to be poor or very poor. 90% responded that the programme rated a very good or excellent with 7% responding that it was good i.e. graded 3-5.

**How useful was the event for your organisation?**



95% of attendees found the event useful with the majority indicating that the events were very useful. 2% did not find the event useful and 3% chose not to respond to this question.

**Would you be willing to participate in similar events in the future?**



95% of respondents indicated that they would be willing to participate in similar events. The attendee that said he/she would not attend again was also the one of the two that did not find the event useful highlighted above. 4% did not offer a response to the question.

### **What parts of the event did you find most useful?**

Of the 66 comments received:

- 58% found the workshops and opportunities for group discussion the most useful part of the event;
- 18% welcomed the opportunity to network at the event;
- 6% found 'all' of the event useful

Individual responses included:

- 'Karl Napieralla speech'
- 'discussing about what success was'
- 'restructuring/remodelling info – handout would have been useful; still unsure whether YS is to target specific groups or is fully inclusive and accessible to all'
- 'discussing and debating the functions/roles of organisations – who is taking responsibility for the zonal action plan – communication'
- 'introduction – knowledge of what youth service do'
- 'everyone had opportunity to speak'
- 'how do we know when we are successful'
- 'Keith Towler excellent speaker'
- 'good introduction to young people's framework. To see the needs of other organisations in NPT'
- 'Keith's talk excellent would like more time'
- 'an opportunity to learn more about future plans'
- 'understanding that there are many different groups involved'

- 'the content was interesting but I was ill equipped to participate in the discussion as I was unfamiliar with the zonal area and the service delivery area'
- 'how the sport of bowls can integrate with the youth services'
- 'understanding of zonal approach'
- 'very useful I found out that there are agencies in the same area of Pontardawe which I wasn't aware of'.

### **Were there any parts that you found not so useful?**

Of the 74 evaluation forms returned 63 (87.5%) either did not complete this section or responded with comments such as 'no', 'N/A', 'no comments', 'none' and 'not really'.

Individual responses were received from 11 attendees as follows:

- 'many people expect the youth service to do it all';
- 'myself as scribe – hard to get involved';
- 'individual small local issues';
- 'presentation could have been shorter';
- 'workshop 1 general discussion as no zone specific staff';
- 'relevance of zone problems to ATC';
- 'too much information crammed into one session';
- 'not enough on where to apply for grants to aid redevelopment and service';
- '1<sup>st</sup> workshop';
- 'gaps in provision – need more information';
- 'zone 12 – not clear about gaps';

### **Any additional comments**

40 (54%) chose not make any additional comments.

15 (20%) made positive comments about the event and the proposed model including:

- 'overall a very good experience'
- 'look forward with interest'
- 'this is a step in the right direction'
- 'this work must be carried through'
- 'good event'
- 'hope all today is looked at and achieved as a long term goal'.

2 (3%) felt that young people should have been present at the event.

2 (3%) were concerned that schools were under represented at the event.

2 (3%) appreciated the opportunity to network with other agencies.

The remaining 13 (17%) provided the following individual comments:

- 'I feel that minorities spoil it for the majority, it will be a long term social and cultural change that will secure successful communities;
- 'Introduction was too long. I was there because I'm interested do not preach to the converted. More time in forum groups needed far too short';
- 'mostly evening provision identified – how will this affect the working week as many are 9-5 workers';
- 'will we get feedback? How will priorities be prioritised?';
- 'long term realistic target setting and active partnership is crucial. Need champions to drive things. How are you addressing needs of young people with Autistic Spectrum Disorder considering the growing number across the county';
- 'Other agencies have to understand that it's not just about the statutory youth service and the only way for this to succeed is 100% commitment and involvement by all';
- 'additional events need to be organised to monitor progress objectively';
- 'would have been nice to watch the whole DVD during break';
- 'lack of clarity as to accountability for zonal inter agency working';
- 'will we witness any noticeable outcomes or changes for young people';
- 'we need to be told what help/support available from NPT';
- 'not enough time for discussion';
- 'still unclear on who leads'.

## DELEGATES

**Tuesday 4<sup>th</sup> December 2007**

Lianne Abbott	Neath Port Talbot CBC – Play Works
Owen Ashton	Neath Port Talbot CBC – Valleys Programme
Diane Brooks	Pontardawe and District Youth Facility
Nick Clark	Neath Port Talbot CBC – Communities First
Angharad Cooke	Neath Port Talbot CBC – Play Works
Philip Crayford	Mid and West Wales Fire & Rescue Service
Alan Currie	Neath Harriers
Christine Davies	Mynachlog Nedd Junior School
Eleri Davies	YGG Tyle'r Ynn
Gordon Davies	Melin Bowls Club
Julie Davies	Neath Port Talbot CBC – Communities First
Keith Davies	Neath Port Talbot CBC – Councillor
Angie Dickinson	Neath Port Talbot CBC – Cultural Services
Sean Dunne	Neath Port Talbot CBC – Route 16 Leaving Care
Lloyd Ellis	Neath Port Talbot CBC – Cultural Services
Lisa Evans	Neath Port Talbot CBC – Performance and Improvement
Geraldine Ferrell	Community Safety Team
Rob Fowler	Neath Port Talbot College
Linda Frame	Llangiwg Primary
Catherine Gadd	Neath Port Talbot CBC – Corporate Strategy
Meirion Gittins	Neath Port Talbot CBC – Cultural Services

Sian Hart	YGG Tyle'r Ynn
Rhian Headon	Neath Port Talbot CBC – Corporate Strategy
David Holtam	Neath Port Talbot Council for Voluntary Services
Terry Howell	Upper Amman Communities First Partnership
Stephen Hunt	Ynysdawley Playing Fields Association
M L James	Neath Port Talbot CBC – Councillor
Steve Jenkins	Neath Port Talbot CBC – Anti Social Behaviour Outreach Team
Ashleigh Jones	GCG Silver Band
Betty Jones	GCG Silver Band
Derek Jones	Neath Port Talbot CBC – Physical Activity and Sports Service
Jan Jones	Neath Port Talbot CBC – Young People's Partnership
Kate Kingsley	Neath Port Talbot CBC – Physical Activity and Sports Service
Linda Llewellyn	Neath Port Talbot CBC – Route 16 Leaving Care
Chris Manley	Llangatwg Comprehensive School
Sam Monk	Neath Port Talbot CBC – Anti Social Behaviour Outreach Team
Del Morgan	Neath Port Talbot CBC – Councillor
Heather Reid	Neath Port Talbot CBC – Support for Inclusion
Kirstie Richards	Ystalyfera and Godregraig Communities First
Roger Skilton	Llangatwg Comprehensive School
Paul Smith	Ysgol Hendre Residential School
Phil Southard	Neath Port Talbot CBC – Education, Leisure and Lifelong Learning
Ryan Taylor	Community Safety Team
Janice Thomas	Dulais Valley Partnership
Gerald Walker	Neath Port Talbot CBC – Route 16 Leaving Care
Russell Ward	Neath Port Talbot CBC – Education, Leisure and Lifelong Learning
Darrel Williams	Neath Port Talbot CBC – Youth Service
Linda Williams	Neath Port Talbot CBC – Councillor
Tom Williams	Upper Amman Valley Communities First
Vicky Williams	Neath Port Talbot CBC – Youth Service

**Total 51**

### **Wednesday 5th December 2007**

Des Andrews	Neath Port Talbot CBC – Youth Service
Carol Brown	Tan Dance
Ray Clarke	Communities First Pelenna
Lisa Clement	Neath Port Talbot CBC – Play Works
Andrea Croxson	Upper Afan Forum
Crystal Davies	Neath Port Talbot CBC – Youth Offending Team
Joel Davies	Neath Port Talbot CBC – Youth Service
Nicola Davies	Neath Port Talbot CBC – Physical Activity and Sport Service
Emma Duffy	Neath Port Talbot CBC – Youth Service
Martin Ellis	Pelenna Communities First Partnership
Christine Esposito	New Sandfields Aberavon
Aled Evans	Neath Port Talbot CBC – Education, Leisure and Lifelong Learning
John Evans	New Sandfields Aberavon
Lisa Evans	Neath Port Talbot CBC – Performance and Improvement
James Flood	Neath Port Talbot CBC – Youth Service
Corrine Fry	Neath Port Talbot CBC – Youth Service

Caryn Furlow-Jones	Neath Port Talbot CBC - Performance and Improvement
Catherine Gadd	Neath Port Talbot CBC – Corporate Strategy Unit
Liz Haines-Williams	Cwmavon YWCA
Neil Hapgood	Neath Port Talbot CBC – Duke of Edinburgh’s Award
Jill Harding	Neath Port Talbot Council for Voluntary Service
Alison Harries	Neath Port Talbot CBC – Play Works
Denzil Haynes	Royal Air Forces Association
Rhian Headon	Neath Port Talbot CBC – Corporate Strategy Unit
Sue Ireson	Neath Port Talbot Council for Voluntary Service
Trish Jarrett	Neath Port Talbot CBC – Looked After Children & Family Support
Jan Jones	Neath Port Talbot CBC – Young People’s Partnership
Olga Jones	Neath Port Talbot CBC - Councillor
Peter Knowles	Cwmavon Residents Action Group
Michelle Langshaw	Domestic Abuse Partnership
Alison Macdonald	Neath Port Talbot CBC – Policy Planning and Commissioning Unit
Ria Mainwaring	Neath Port Talbot CBC – Youth Service
Alex Maskell	Neath Port Talbot CBC – Valleys Programme
Lester McCalmon	Neath Port Talbot CBC – Youth Service
Jeremy Morgan	Shelter Cymru
Karl Napieralla	Neath Port Talbot CBC – Education, Leisure and Lifelong Learning
Jade Owen	Neath Port Talbot CBC – Youth Service
Katie Parry	Local Health Board Health Promotion
Sharon Pruski	Neath Port Talbot CBC – Education Development & Inclusion Service
Liz Randall	Communities First Cwmavon, Brynbryddan & Penllyn
Glyn Rawlings	Neath Port Talbot CBC – Councillor
John Rogers	Neath Port Talbot CBC - Councillor
Steve Roper	Pontrhydyfen Weight Training and Fitness Club
Mari Shufflebotham	Communities First Cwmavon, Brynbryddan & Penllyn
Albert Stephens	Afan Angling Club
Stacy Sullivan	Neath Port Talbot CBC – Youth Offending Team
Alan Thomas	Neath Port Talbot CBC – Social Services, Housing and Health
<b>Pam Thomas</b>	
Justin Thompson	Neath Port Talbot CBC – Youth Service
Russell Ward	Neath Port Talbot CBC – Education, Leisure and Lifelong Learning
Steve Wellington	Neath Port Talbot CBC – Youth Service
Dave Whitelock	Communities First Brynbyddan and Penllyn
Amanda Williams	Neath Port Talbot CBC – Youth Service
Ceri Roberts	Mid and West Wales Fire and Rescue Service
Janet Weaver	Neath Port Talbot CBC – Youth Service
Vicky Williams	Neath Port Talbot CBC – Youth Service
Wendy Williams	Cwmavon Residents Action Group
Len Willis	Neath Port Talbot CBC - Councillor
Sian Workman	Neath Port Talbot CBC – Youth Service
Shelley Winter	Neath Port Talbot CBC – Youth Service
<b>Total 60</b>	

**Tuesday 11<sup>th</sup> December 2007**

Leigh Batchelor      Communities First Briton Ferry West

Harry Bebell	Neath Port Talbot CBC – Councillor
Grant Boterill	Neath Port Talbot CBC – Anti Social Behaviour Team
David J Davies	Resolven Miners Welfare
Mandy Doel	Neath Port Talbot CBC – Youth Service
Karen Davies	Neath Port Talbot CBC – Youth Offending Team
<b>Kelvin Davies</b>	
Rosalyn Davies	Resolven Miners Welfare
Sandra Davies	Neath Port Talbot CBC – Skills and Training Unit, Princes Trust
David Edwards	Communities First Melin
Aled Evans	Neath Port Talbot CBC – Education, Leisure and Lifelong Learning
Carolyn Evans	Neath Port Talbot CBC – Youth Service Communities First Team
Christopher Evans	334 (Neath) Squadron Air Training Corps
Lisa Evans	Neath Port Talbot CBC – Performance and Improvement
Caryn Furlow-Jones	Neath Port Talbot CBC – Performance and Improvement
Catherine Gadd	Neath Port Talbot CBC – Corporate Strategy Unit
<b>Jancie Gardner</b>	
Lynette Grey	Coedffranc Community Council
Rhian Headon	Neath Port Talbot CBC – Corporate Strategy Unit
Jason Heaney	Neath Port Talbot CBC – Inclusive Learning Project
Joanne Heatley	Neath Boys and Girls Club
Juliet Hopkins	Neath Port Talbot CBC - Councillor
Ioan Howell	South Wales Police
Hugh James	Neath Port Talbot CBC – Councillor
Michael Jenkins	Neath Port Talbot CBC - Social Services, Housing and Health
Helen Jones	Mentro Allan
J Jones	Neath Port Talbot CBC – Councillor
Jan Jones	Neath Port Talbot CBC – Young People’s Partnership
Philip Jones	Briton Ferry Town Community Council
Alex Maskell	Neath Port Talbot CBC – Valleys Programme
David Merryweather	Briton Ferry Chess Centre
Peter Moule	Coedffranc Community Council
Joanne Mulcahy	Neath Port Talbot CBC – Play Works
Sue Muxworthy	Council for Wales of Voluntary Youth Services
Karl Napieralla	Neath Port Talbot CBC – Education, Leisure and Lifelong Learning
Paul Nunn	Neath Port Talbot CBC – Youth Service
Lesley Pain	Neath Port Talbot CBC – Inclusive Learning Project
Sheila Penry	Neath Port Talbot CBC - Councillor
Gaynor Pickin	Neath Port Talbot Council for Voluntary Service
Peter Rees	Neath Port Talbot CBC – Councillor
P D Richards	Neath Port Talbot CBC – Councillor
Susan Samuel	Neath Port Talbot CBC – Children and Young People Partnership
Malcolm Scott	Glynneath Training Centre
Dave Scourfield	Neath Port Talbot CBC – Anti Social Behaviour Outreach Team
Katie Spendiff	Neath Port Talbot Council for Voluntary Service
John Tallamy	Neath Port Talbot CBC – Councillor
John Thomas	Interplay
Keith Towler	Save the Children – Wales
Derek Vaughan	Neath Port Talbot CBC – Leader
R Wagstaff	Afan Forest Park
Russell Ward	Neath Port Talbot CBC – Education, Leisure and Lifelong Learning

John Warman  
Vicky Williams

Neath Port Talbot CBC - Councillor  
Neath Port Talbot CBC – Youth Service

**Total 53**

**Total 164**