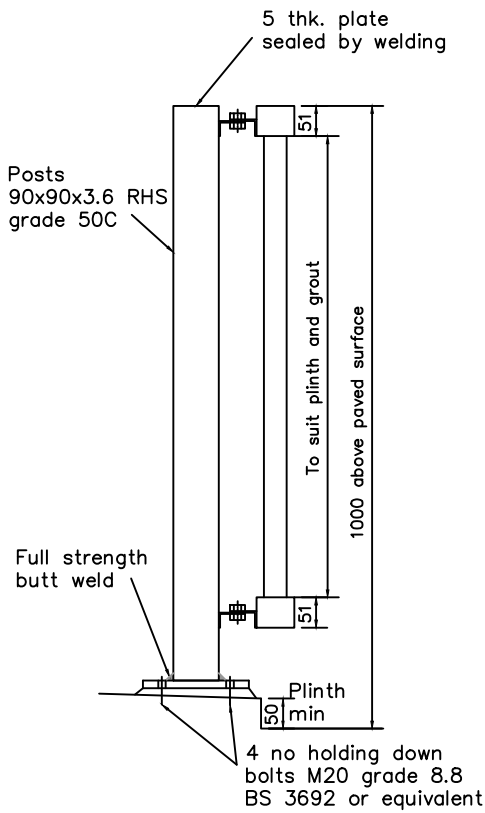
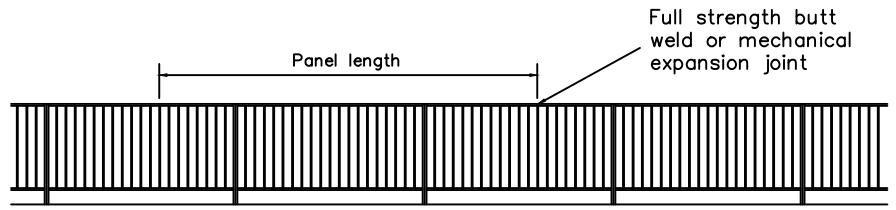


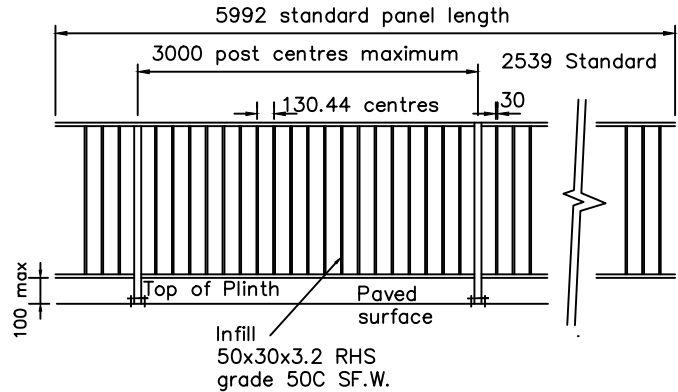
Rev.	Amendments	Date	Made By	Chk'd By



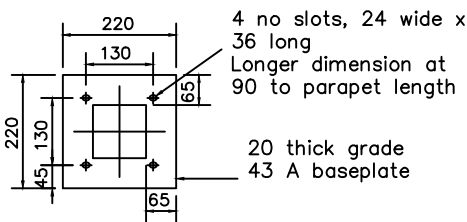
TYPICAL SECTION THROUGH PARAPET



TYPICAL ELEVATION OF PARAPET

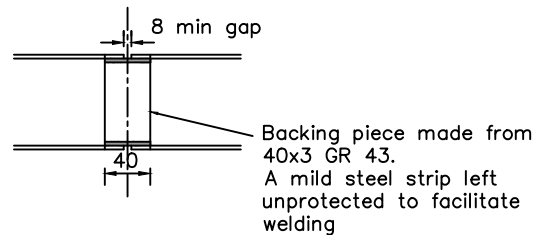


TYPICAL PANEL

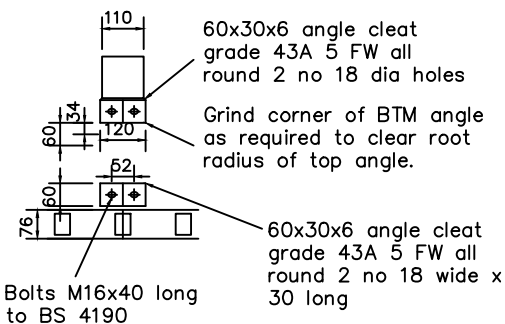


Moments of resistance of base anchorage 21 kN/m

PLAN OF BASEPLATE



SITE JOINT IN LONGITUDINALS
FULL STRENGTH BUTT WELD



LONGITUDINAL TO POST CONNECTION

NOTES

1. All dimensions in millimetres unless otherwise stated.
2. Posts to be vertical : rails to follow longitudinal fall of coping (infill members to be vertical)
3. Cleats to be set to suit slope of longitudinals
4. All material to be in accordance with BS ISO 4360 grade of material as noted
5. Hollow sections to be in accordance with BS 4848 Part 2
6. Welding to be in accordance with BS EN ISO 5135
7. Parapets to be mounted on 50mm minimum height plinth.

GROUP P2 VERTICAL INFIL VEHICLE / PEDESTRIAN PARAPET
48KPH TRAFFIC SPEED

COMMON STANDARDS FOR WALES
HIGHWAY DESIGN GUIDE

Drawn	MT
Checked	SZ
Date	Feb '20
Scale	N.T.S.
Drg. No.	407
Rev.	