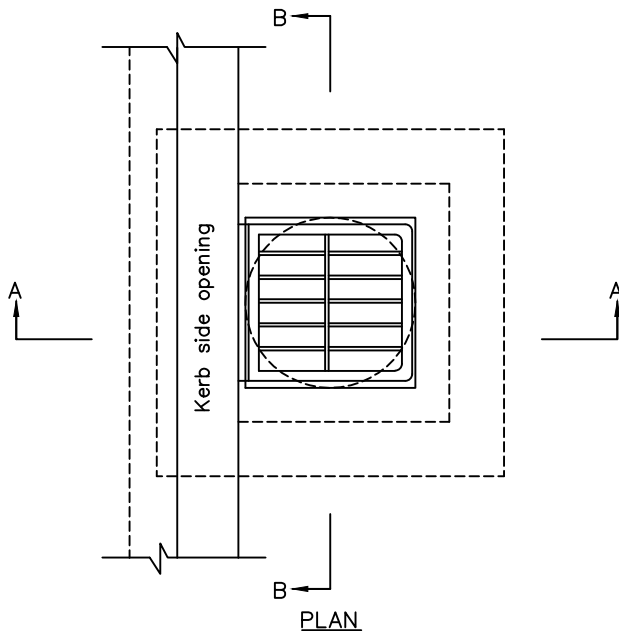
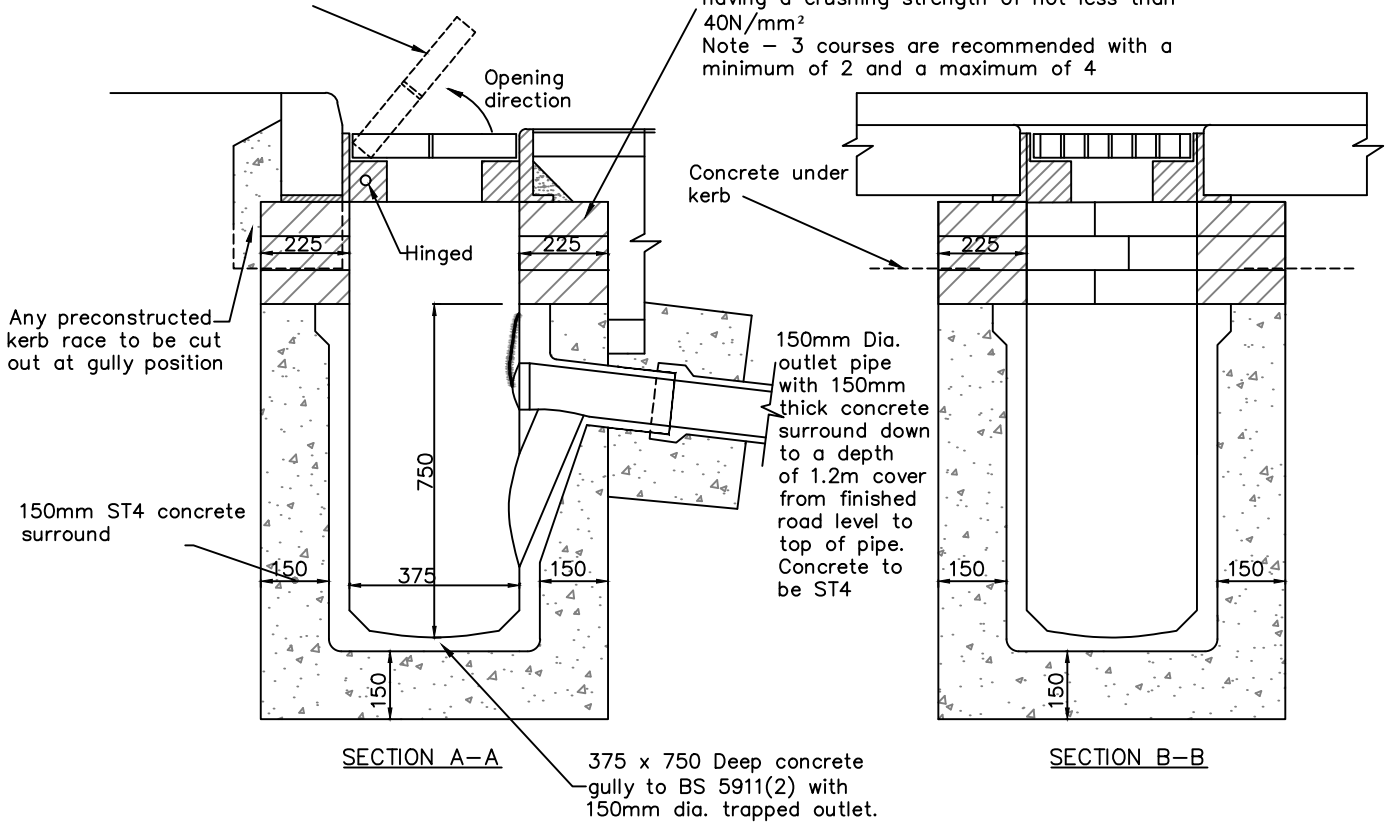


Rev.	Amendments	Date	Made By	Chk'd By

Heavy duty grating and frame, single piece, hinged, non-rock, kerb side opening Class D400 to BS EN 124 and Kitemarked, minimum flange thickness of 75mm. The clear opening shall be 370 x 430 and a clear waterway area of 980cm as per the Watershed D400 or equivalent alternative to be agreed prior to use.  
Cover shall be set 5mm below finished road level.

HD type Class 'B' engineering brick 225mm thick to BS EN 771 or concrete bricks to BS EN 771 having a crushing strength of not less than 40N/mm<sup>2</sup>  
Note - 3 courses are recommended with a minimum of 2 and a maximum of 4



#### NOTES

1. All dimensions are in millimeters unless otherwise stated.
2. Gratings must be hinged with kerb side opening.
3. Gully pot must be correctly positioned in line with the kerb face
4. Lintels will not be permitted
5. A small amount of corbelled brickwork will be permitted up to 25mm per course.
6. Bricks laid on edge will not be permitted
7. Gully pots must be 375mm diameter and 750mm depth.

## PRECAST CONCRETE GULLY

COMMON STANDARDS FOR WALES  
HIGHWAY DESIGN GUIDE

Drawn	MT
Checked	SZ
Date	Feb '20
Scale	N.T.S.
Drg. No.	510
Rev.	