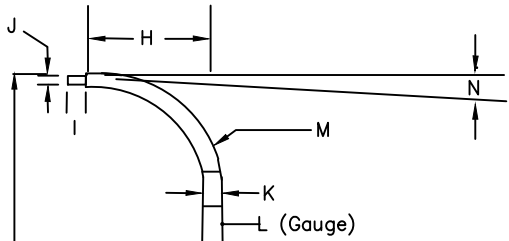
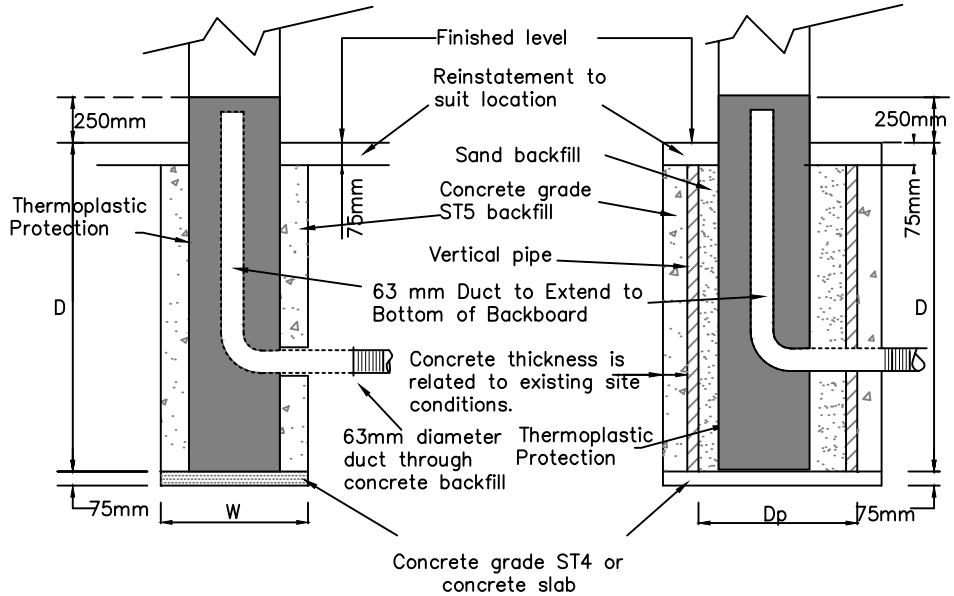


Rev.	Amendments	Date	Made By	Chk'd By



**NOTE**

Columns located within verge or other grassed areas are to be provided with a concrete mowing strip approx 900 x 900mm laid to suit site levels. Mowing strip may be formed by forming a square using 900 x 150mm edging kerbs around the post and filling with 150mm of grade ST4 concrete with floated finish.



DETAIL "A"

HT	12m	10m	8m	6m	5m
D	700mm	500mm	200mm	100mm	800mm
W	450mm	370mm	370mm	370mm	290mm

HT is mounting height of lighting column

DETAIL "B"

HT	12m	10m	8m	6m	5m
D	700mm	500mm	200mm	100mm	800mm
DP	450mm	375mm	375mm	300mm	300mm

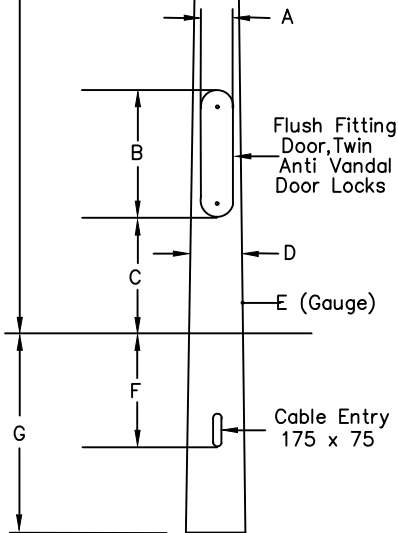
HT is mounting height of lighting column

DETAIL "C"

HT	12m P/T	10m	8m	6m	6m R/L
A	100mm	115mm	100mm	100mm	100mm
B	600mm	600mm	500mm	500mm	600mm
C	600mm	600mm	600mm	600mm	250mm
D	202mm	202mm	190mm	145mm	145mm
E	5mm	5mm	4mm	3mm	3mm
F	500mm	500mm	500mm	500mm	525mm
G	1700mm	1500mm	1200mm	1000mm	1000mm
H	P/T	1000mm	1000mm	400mm	P/T
I	110mm	100mm	100mm	100mm	76mm
J	76mm	42mm	42mm	42mm	P/T
K	90mm	76mm	76mm	60mm	76mm
L	5.93mm	5mm	4mm	3.65mm	3mm
M	P/T	R380mm	R380mm	R300mm	P/T
N	P/T	5'	5'	5'	P/T

STANDARD ALUMINIUM COLUMN SPECIFICATION

1. Column Doors To Be Flush Fitting With Anti Vandal Centrally Pinned M8 Allan Headed S/S Screw Locks.
2. Earth Pin In Door.
3. Thermoplastic Root Protection.
4. Column Base Protector.
5. Standard Reinforcement Tube.
6. Spigot To Be Bonded And Secured With E32 Structural Adhesive And Pinned With M6 S/S Tension Pin.
7. 12M Post Top And 6M Raise And Lower Columns Are Included For Reference Refer To Manufacturers Drawings For Additional Detail.
8. The Final Position Of Every Column Shall Be Determined On Site With The Approval Of The LHA, Every Access Door Must Face Away From Oncoming Traffic.



DETAIL "C"

ALUMINIUM LIGHTING COLUMN

COMMON STANDARDS FOR WALES  
HIGHWAY DESIGN GUIDE

Drawn	MT
Checked	SZ
Date	Feb '20
Scale	N.T.S.
Drg. No.	701
Rev.	