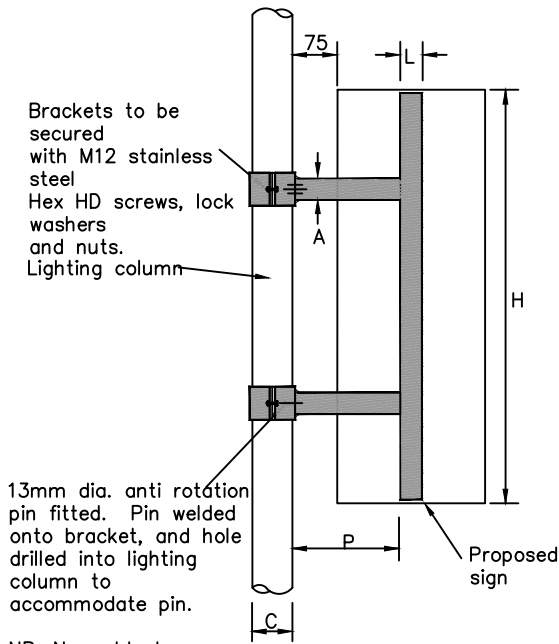


Rev.	Amendments	Date	Made By	Chk'd By

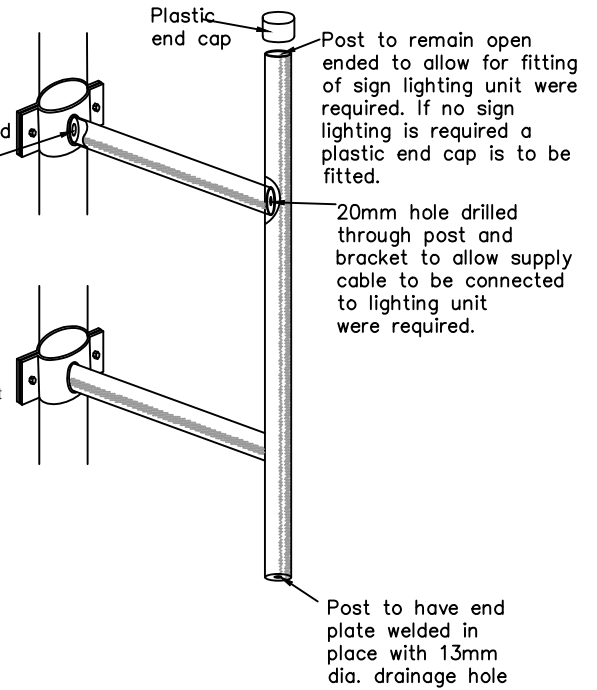


NB. No welds to appear on column face of bracket clamp so preventing the bracket seating on the column correctly.

SECTION
(N.T.S.)

50mm dia. hole drilled through bracket to allow supply cable to be connected to lighting unit. 20mm hole to be drilled through lighting column on site to accommodate cable were required.

You are required to contact NPTCBC Street Lighting Engineer before any drilling into street columns



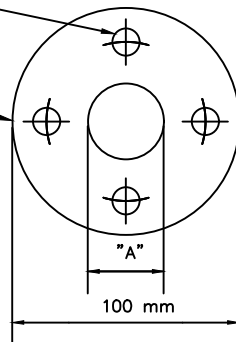
ISOMETRIC VIEW
(N.T.S.)

Typical Specific Requirements									
Assembly	C	H	P	L	A	Finish	Column Clamp Req'd	Wall Mounting Flange Req'd	
A	139.7	300	390	76	34	Galvanised	Yes	No	
B									
C									

4 Holes 12 mm Diameter on 70mm Diameter PCD. to Accept 4 No M10 Masonary Fixings.

Details of Alternative Wall Mounting Flange to be Used Instead of Column Clamp

M.St. Flange 100 mm Diameter x 12 mm Thick.



NOTES

1. All dimensions shown are in millimetres.
2. To be manufactured from mild steel hot dipped galvanised to BS EN ISO 1461 1999.

BRACKET ASSEMBLY TO ATTACH SIGN TO LIGHTING COLUMN OR STRUCTURE

COMMON STANDARDS FOR WALES HIGHWAY DESIGN GUIDE

Drawn	MT
Checked	SZ
Date	Feb '20
Scale	N.T.S.
Drg. No.	703
Rev.	