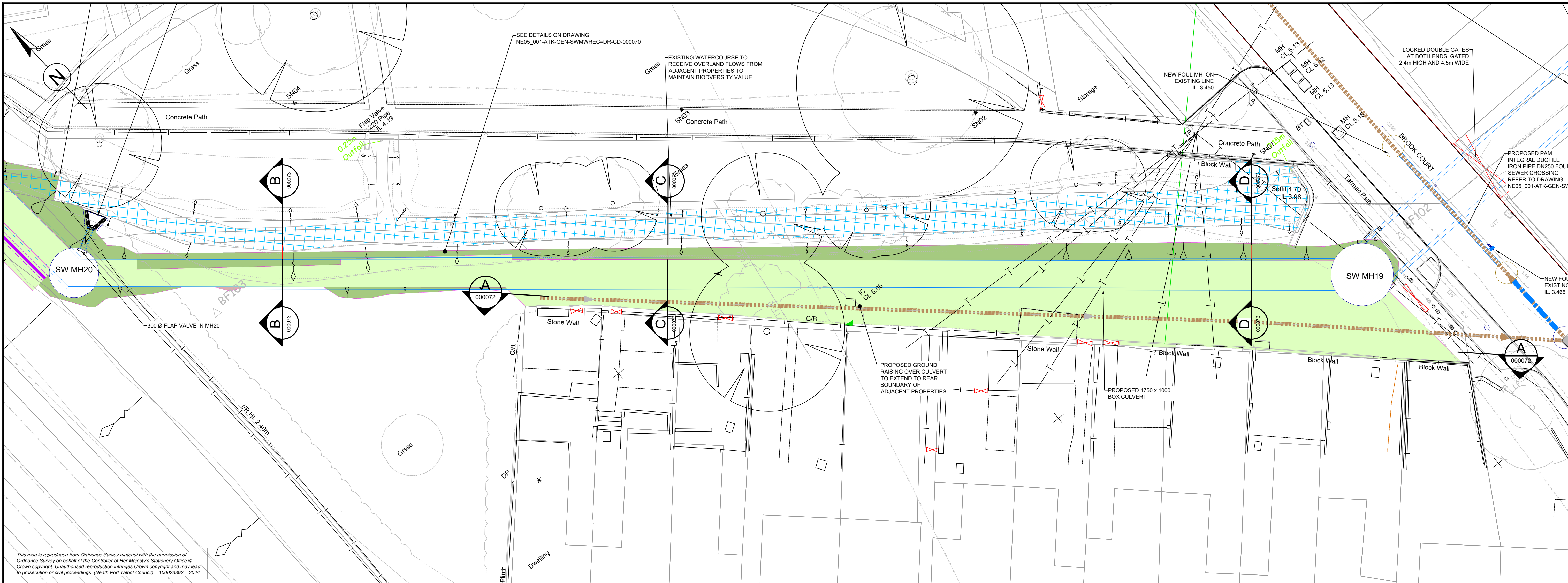


DO NOT SCALE

100
0 10
Millimetres



PLAN
1:250

SAFETY, HEALTH AND ENVIRONMENTAL INFORMATION

In addition to the hazards/risks normally associated with the types of work detailed on this drawing, note the following significant residual risks (Reference shall also be made to the design hazard log).

Construction

- Requirement for services diversions in advance of works to install new culvert
- Potential for encountering unplotted services or private underground services
- access to be maintained to residential and commercial properties
- Presence of asbestos containing materials at Carreg Hir
- Presence of contaminated soils in areas of former industrial use (land at Penrhiwlin)
- Maintaining of existing surface water flows
- Sudden increase in flows

Maintenance / Cleaning

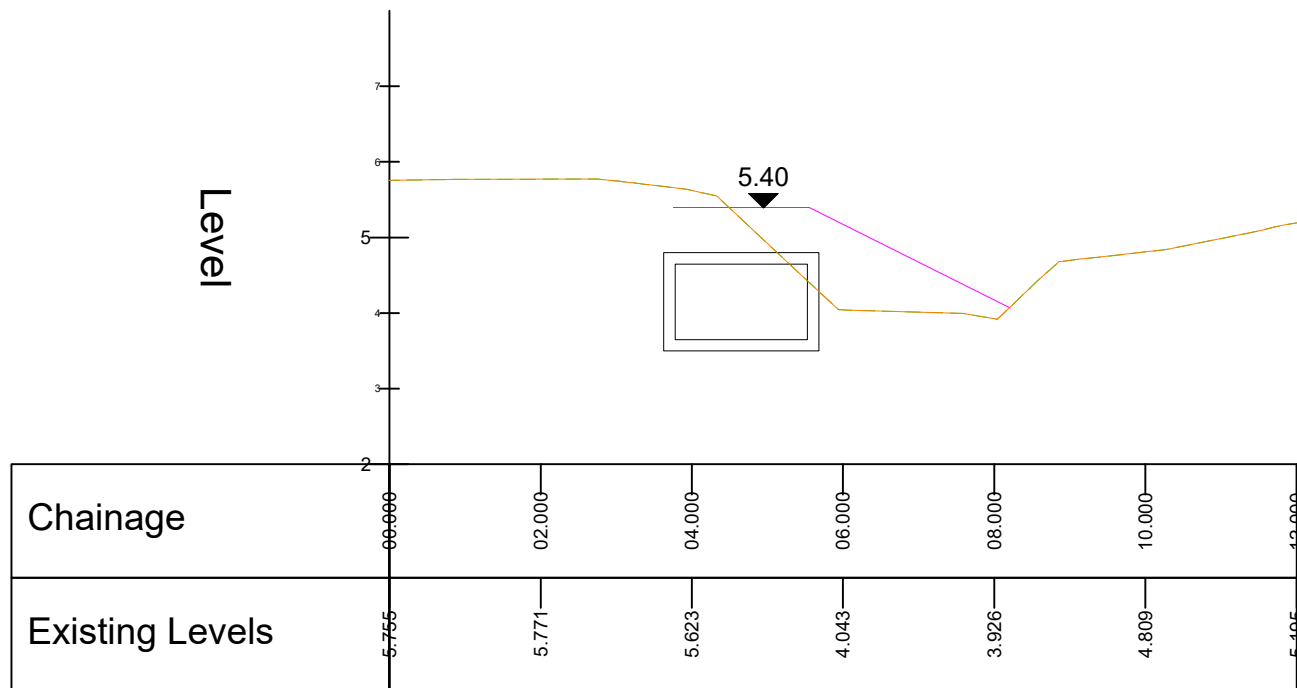
- Trash screen will require regular inspection and clearance
- Trash screen and outfall to be inspected after storm events
- Attenuation tanks to be cleaned by high flow jetting
- Silt/rock traps to be emptied to prevent culvert blockage

Use

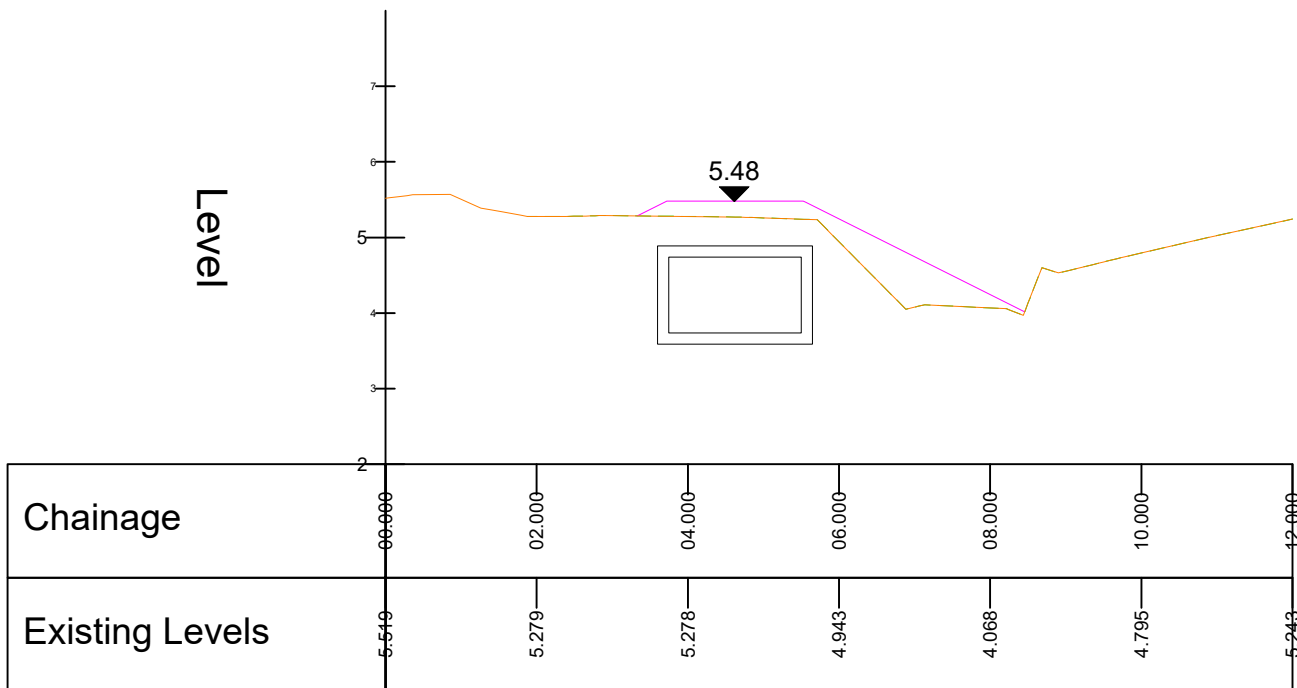
- Trash screen will require regular inspection and clearance
- Trash screen and outfall to be inspected after storm events
- Attenuation tanks to be cleaned by high flow jetting
- Silt/rock traps to be emptied to prevent culvert blockage

Decommissioning / Demolition

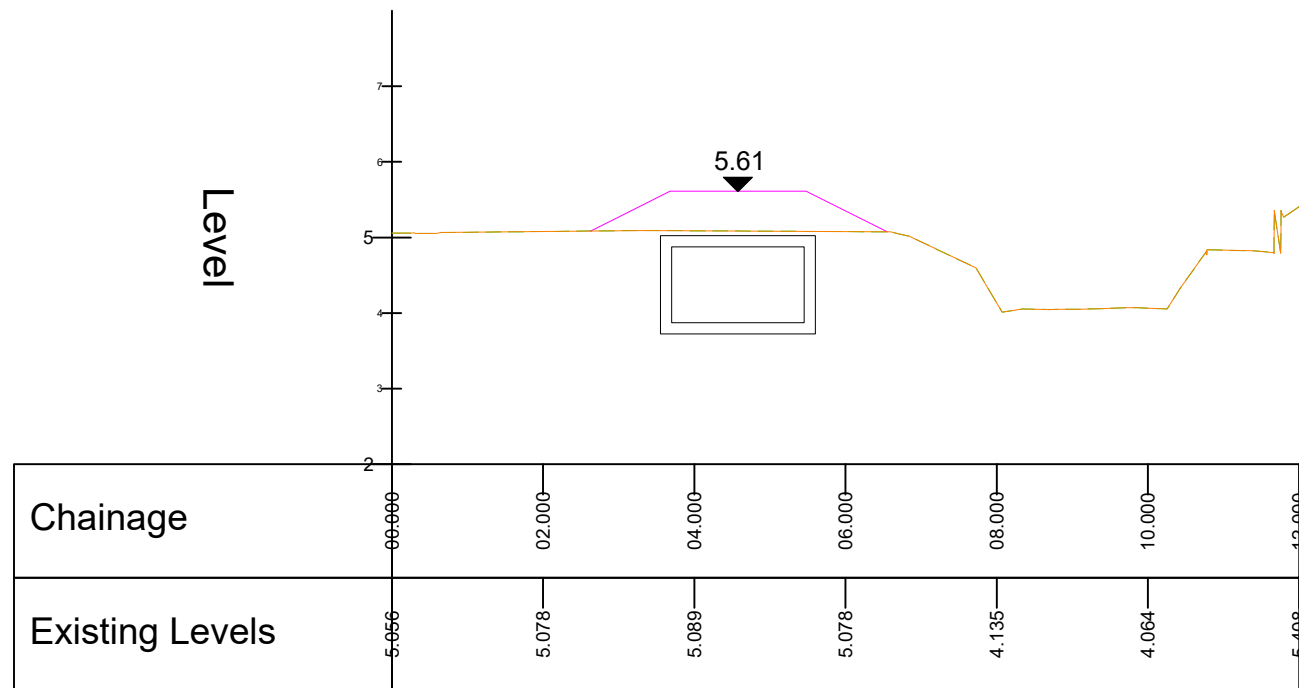
- Requirement for services diversions in advance of works to install new culvert
- Potential for encountering unplotted services or private underground services
- access to be maintained to residential and commercial properties
- Presence of asbestos containing materials at Carreg Hir
- Presence of contaminated soils in areas of former industrial use (land at Penrhiwlin)
- Maintaining of existing surface water flows
- Sudden increase in flows



B CROSS SECTION
1:100



C CROSS SECTION
1:100



D CROSS SECTION
1:100

NOTES

- ALL DIMENSIONS ARE IN MILLIMETRES UNLESS OTHERWISE NOTED.
- ALL LEVELS ARE IN METRES ABOVE ORDNANCE DATUM UNLESS OTHERWISE NOTED.



SERVICES LEGEND

- | | |
|---|---|
| Neath Port Talbot Borough Council - Drainage | GTC |
| Neath Port Talbot Borough Council - Gully | Western Power Distribution |
| Neath Port Talbot Borough Council - Street Light | Western Power Distribution - Overhead |
| Neath Port Talbot Borough Council - Street Lighting | Western Power Distribution - Substation |
| Neath Port Talbot Borough Council - Electric Street Furniture | Radar Trace |
| Dwr Cymru Welsh Water - Sewerage | Ysgol Carreg Hir Surface Water - Drainage |
| Dwr Cymru Welsh Water - Water | Ysgol Carreg Hir Surface Water - Filter Drain |
| Openreach - British Telecommunications | Ysgol Carreg Hir Foul Sewer |
| Openreach - British Telecommunications - Overhead | Network Rail asset |
| Virgin Media | |
| Vodafone | |
| Wales and West Utilities | |

Description						
Status	Revision	Drawn	Checked	Reviewed	Authorised	Issue Date
S0	P01.2	AJ	---	---	---	07/04/25

Description						
Status	Revision	Drawn	Checked	Reviewed	Authorised	Issue Date
S0	P01.2	AJ	---	---	---	07/04/25

Description						
Status	Revision	Drawn	Checked	Reviewed	Authorised	Issue Date
S0	P01.2	AJ	---	---	---	07/04/25

Drawing Suitability		Status	Project Title	
WORK IN PROGRESS		S0	GRANDISON BROOK	
 Member of the SNC-Lavalin Group Copyright © SNC Lavalin (2019)		West Glamorgan House 12 Orchard Street Swansea West Glamorgan SA1 5AD Tel: +44 (0)1792 641172 Fax: +44 (0)1792 472019 www.atkinsglobal.com		Drawing Title
		BROOK COURT - SW MH19-SW MH20 PLAN AND CROSS SECTIONS		
Client		Drawing Number		
 NEATH PORT TALBOT COUNTY BOROUGH COUNCIL		Project		Originator Volume NE05_001 - ATK - GEN - SWMWREC - DR - CD - 000073
		Location		Type Role Number
Original Size: A1		Scale:	Project Ref. No: 5192793	Sheet: of Rev: P01.2