



**Gweithdai Pentref
Glynorrwg
Port Talbot
SA13 3EA**

**Glynorrwg Village
Workshops
Port Talbot
SA13 3EA**

With an array of various sized industrial units and offices all under one roof
Ceir amrywiaeth o unedau diwydiannol a swyddfeydd o feintiau gwahanol dan yr unto

Am Fwy o wybodaeth, cysylltwch â :

Richard Ford, Eiddo ac Adfywio,

Y Ceiau, Ffordd Brunel, Parc Ynni Baglan,

Castell-nedd, SA11 2GG

01639 686694 / r.ford@npt.gov.uk

For further Information, please contact:

Richard Ford, Property & Regeneration,

The Quays, Brunel Way, Baglan Energy Park,

Neath, SA11 2GG

01639 686694 / r.ford@npt.gov.uk



**Neath Port Talbot
Castell-nedd Port Talbot**
County Borough Council Cyngor Bwrdeistref Sirol

Mae'r gweithdai hyn i'r de o bentref Glyncorrwg ym Mharc Coedwig Afan ger canolfan boblogaidd y Pyllau a Beicio Mynydd.

Ceir amrywiaeth o unedau diwydiannol a swyddfeydd o feintiau gwahanol dan yr unto gyda choridorau gwasanaeth sy'n gwasanaethu pob un o'r unedau.

Mae cyfleusterau toiledau cymunedol a digon o le i barcio ar gyfer cwsmeriaid a gweithwyr. Sylwer nad oes gan bob uned ar yr ystâd hon ddrysau rholio.

Lleoliad

O'r M4, ewch ar G40 gan ymuno â'r A4107 a pharhau yn eich blaen heibio i Gynonville, Dyffryn etc. Unwaith i chi gyrraedd y Cymer, trowch i'r dde i Lyncorrwg, a chyn mynd i mewn i Lyncorrwg, dilynwch yr arwyddion i ganolfan y Pyllau a Beicio Mynydd ac mae'r gweithdai ar y chwith.

Ymwadiad – Mae Cyngor Bwrdeistref Castell-nedd Port Talbot wedi gwneud pob ymdrech i sicrhau bod yr wybodaeth a roddir ar y gwe-dudalennau hyn yn gywir. Ni ellir ystyried y manylion a roddir fel cynnig na rhan o gynnig. Dylai darpar denantiaid gadarnhau bod yr wybodaeth a roddir yn fanwl gywir.

These workshops are situated south of the village Glyncorrwg in the Afan Forest Park next to the popular Ponds and Mountain Bike centre.

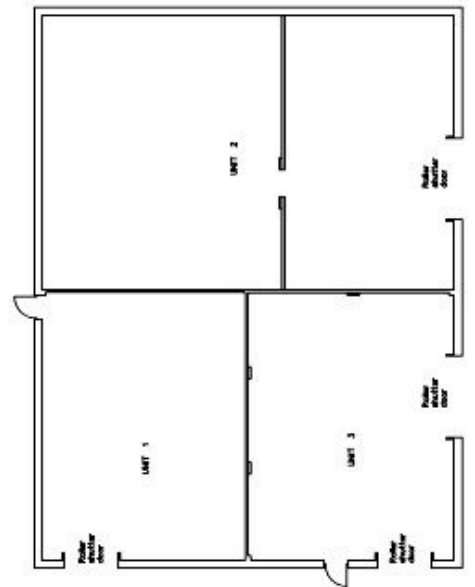
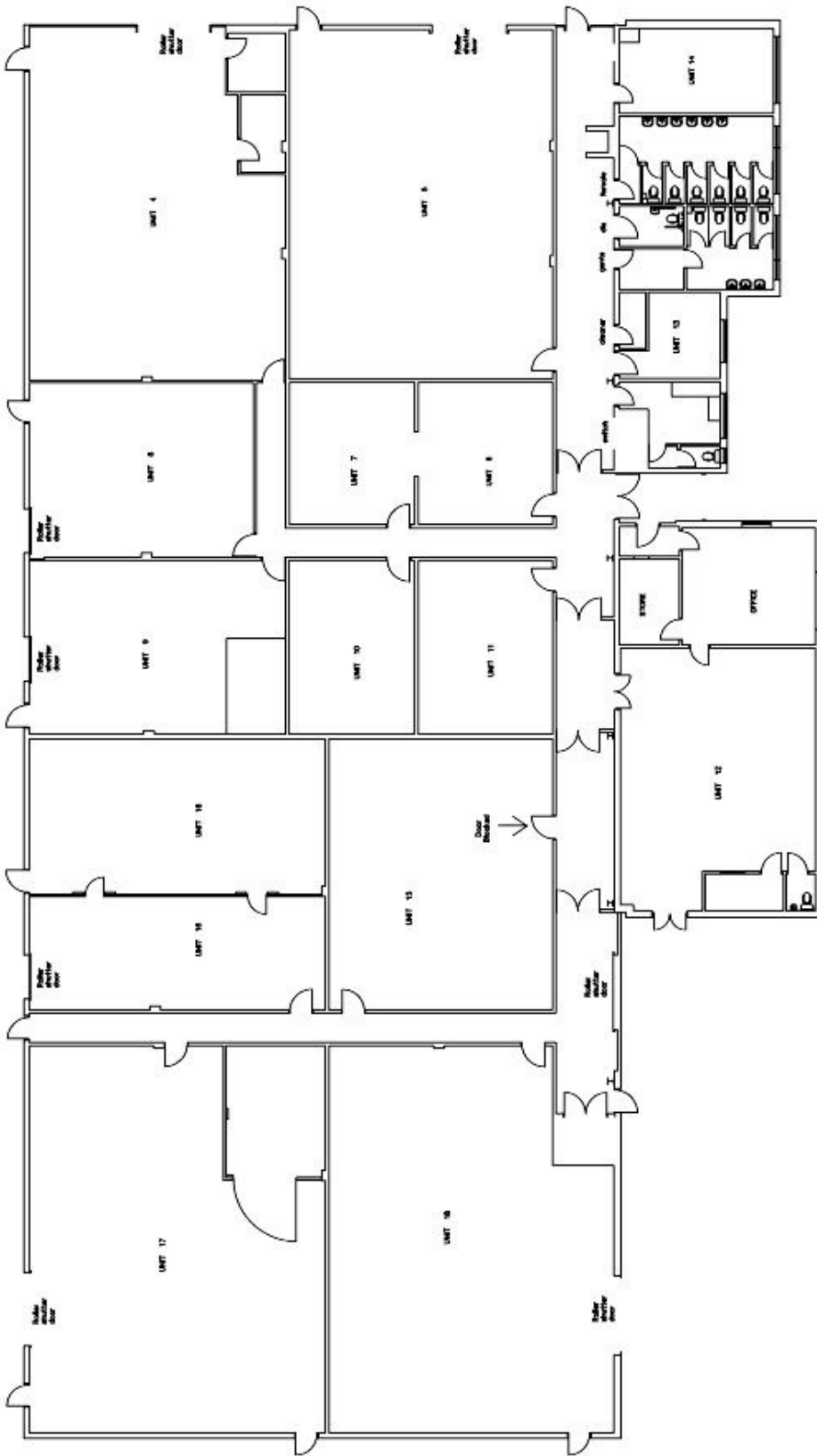
With an array of various sized industrial units and offices all under one roof with service corridors serving each of the units.

There are communal toilet facilities provided and ample parking facilities on site for both customers and employees. Please note that at that this estate not all of the units have roller shutter doors.

Location

From the M4 take J40 joining the A4107 continue forward past Cynonville, Duffryn etc. Once you reach Cymmer, take the turning left to Glyncorrwg, before entering Glyncorrwg follow the signs for the Ponds Mountain Bike centre and the workshops are on the left side.

Disclaimer – Neath Port Talbot County Borough Council have made every attempt to ensure that the information provided on these web pages are correct. The particulars displayed do not constitute an offer or any part of an offer. Prospective tenants should satisfy themselves of the accuracy of the information provided.



Cynllun Mewnol

Internal Layout



Neath Port Talbot
Castell-nedd Port Talbot
County Borough Council Cyngor Bwrdeistref Sirol