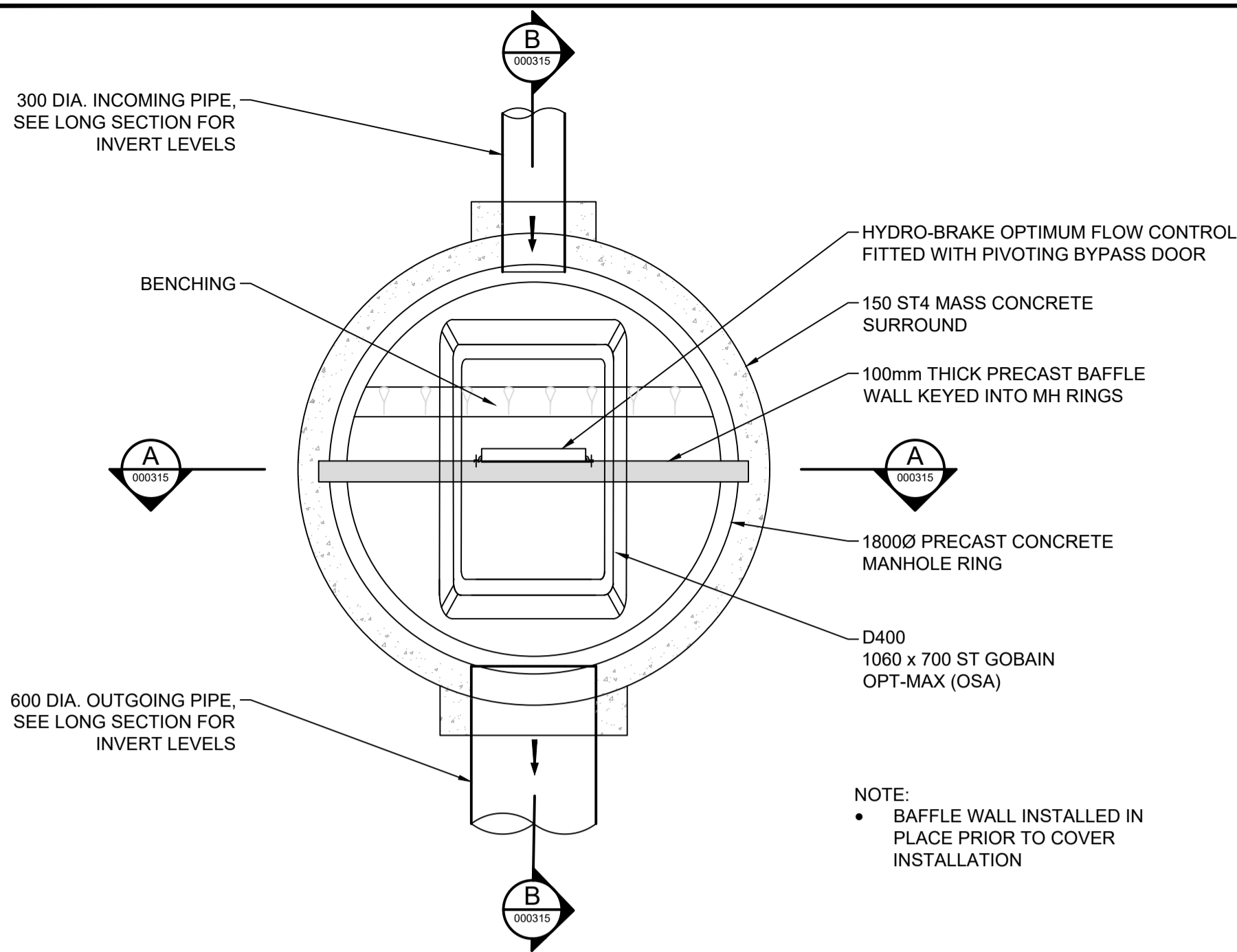


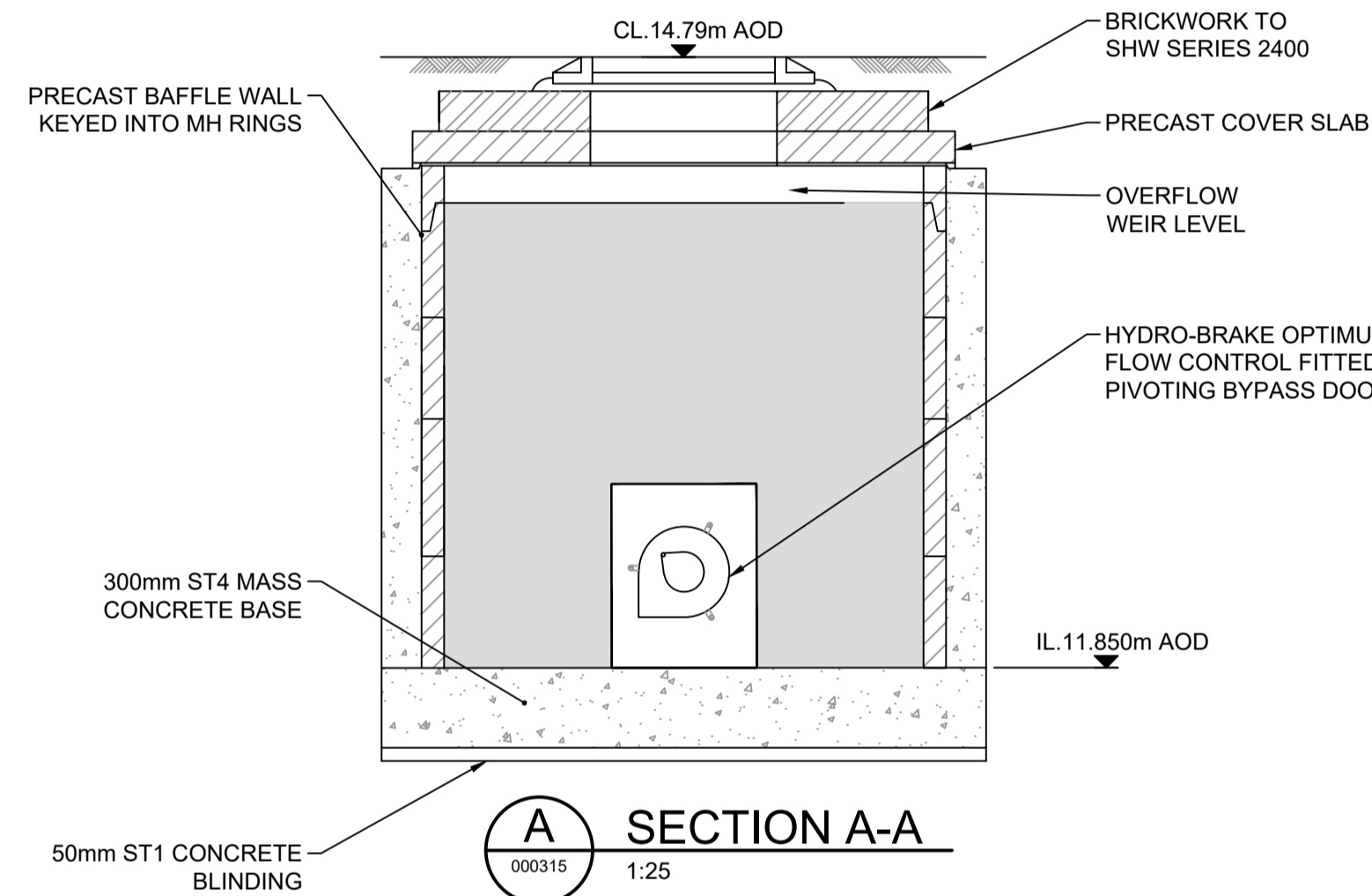
DO NOT SCALE

100
0 10
Millimetres



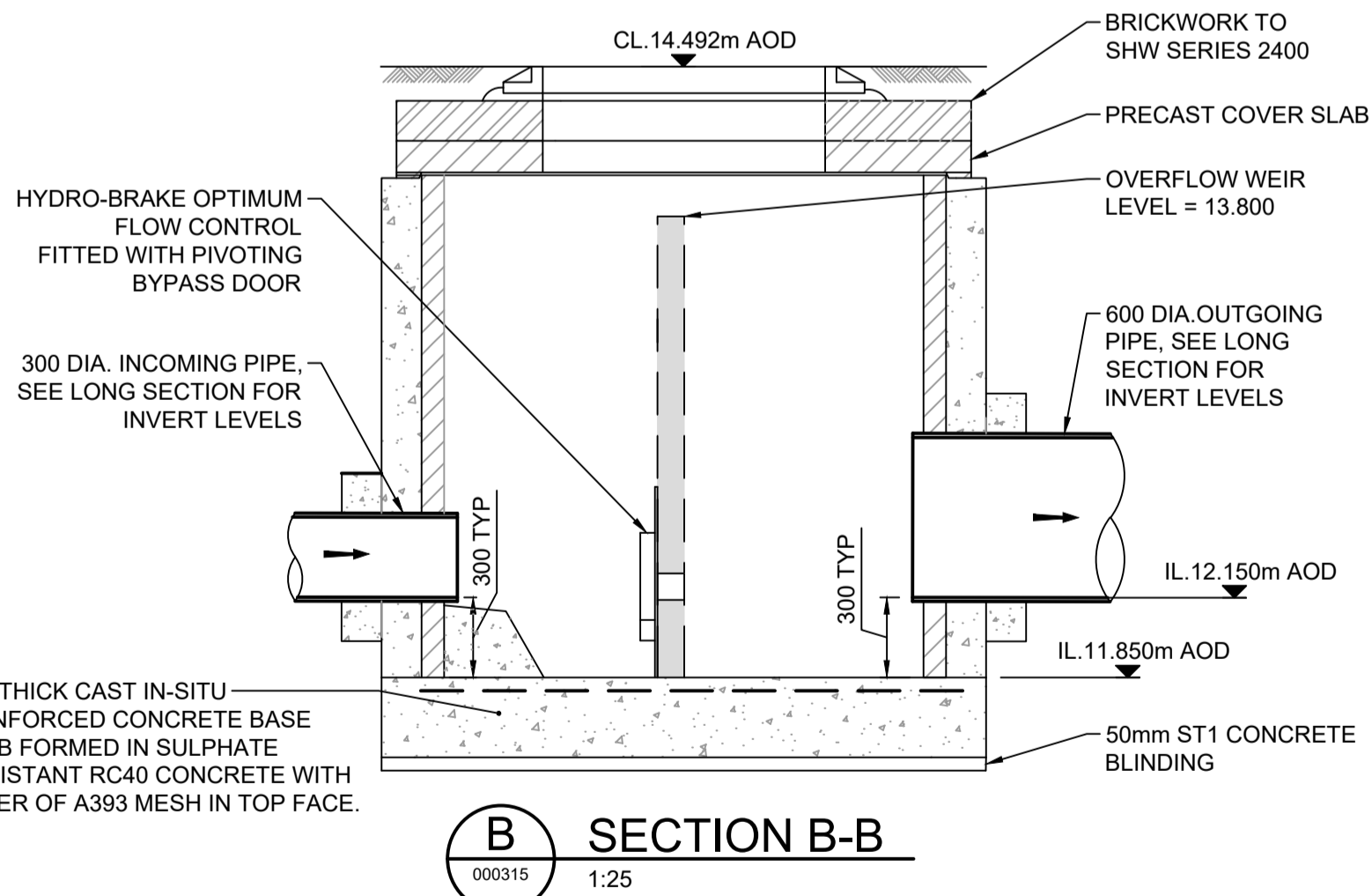
FLOW CONTROL CHAMBER - PLAN

1:25



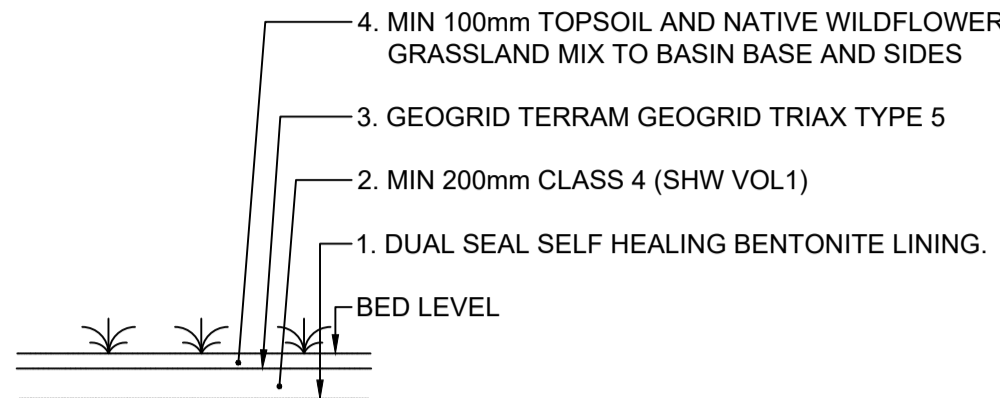
SECTION A-A

1:25



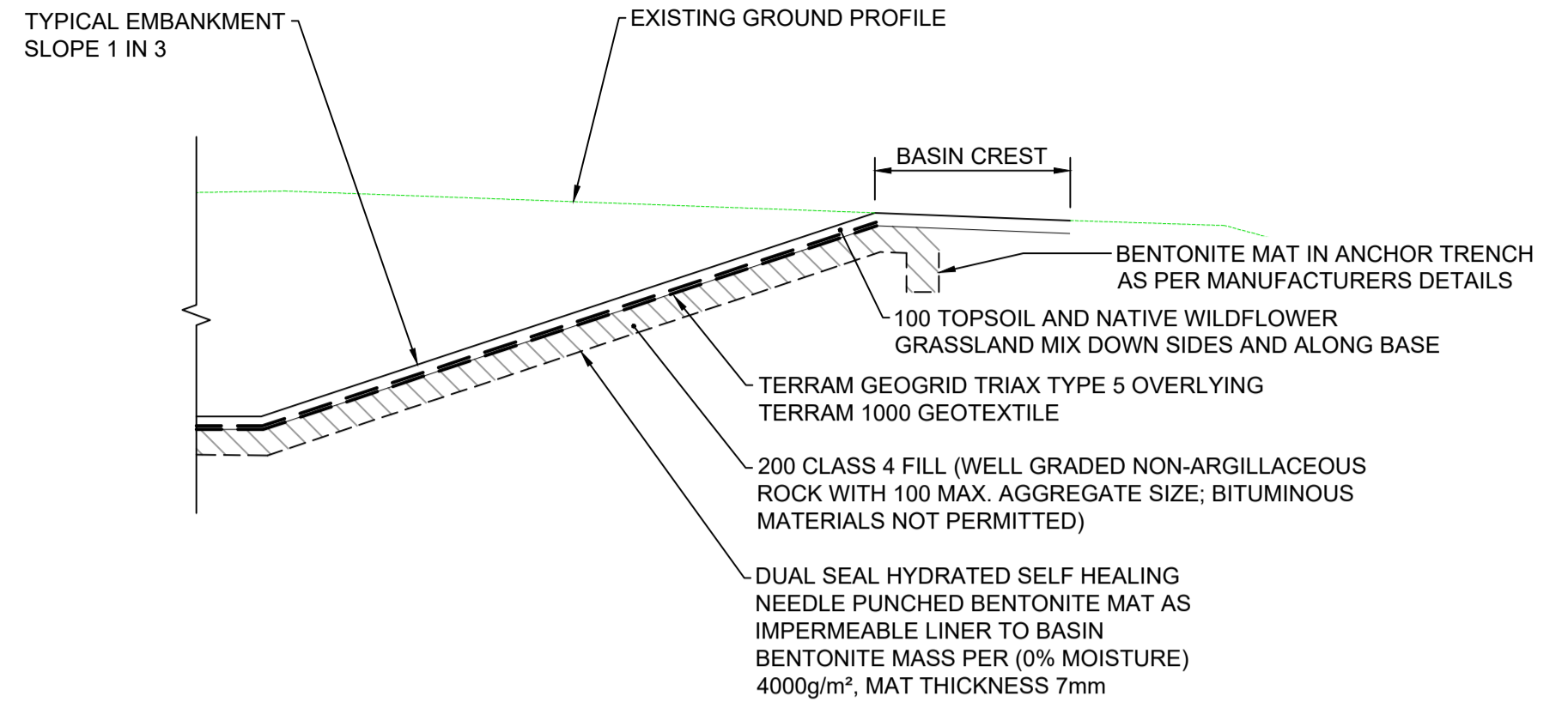
SECTION B-B

1:25



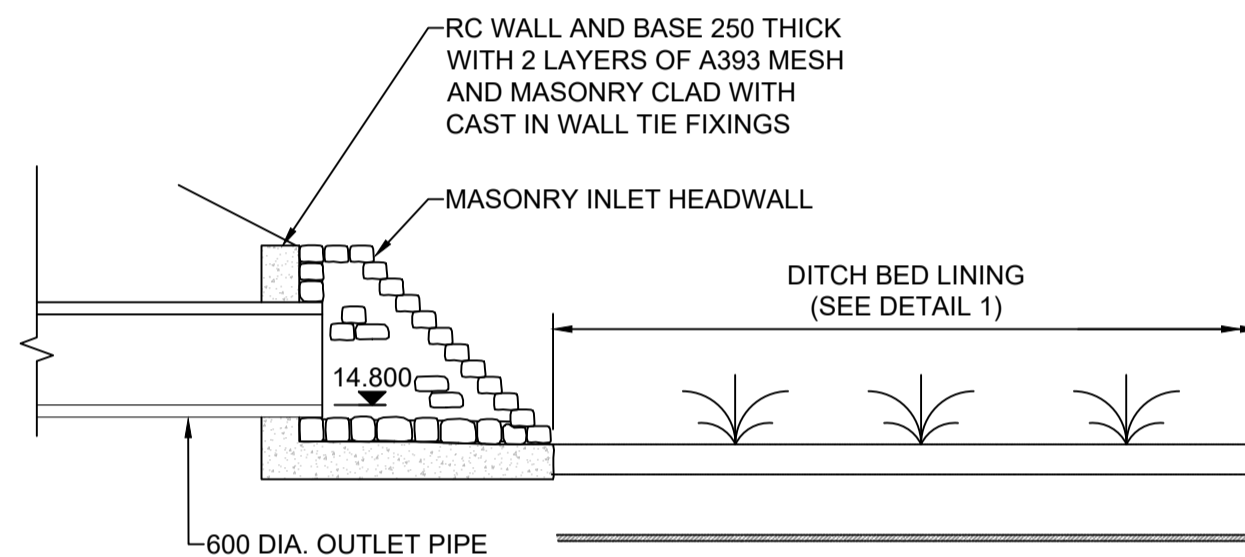
DETAIL '1' - DITCH LINING DETAIL

1:100



DETAIL '2' - LINING DETAIL TO EMBANKMENT

1:50



SECTION C-C

1:50

SAFETY, HEALTH AND ENVIRONMENTAL INFORMATION

In addition to the hazards/risks normally associated with the types of work detailed on this drawing, note the following significant residual risks (Reference shall also be made to the design hazard log).

Construction

- Requirement for services diversions in advance of works to install new culvert
- Potential for encountering unplotted services or private underground services
- access to be maintained to residential and commercial properties
- Presence of asbestos containing materials at Carreg Hir
- Presence of contaminated soils in areas of former industrial use (land at Penrhiwin)
- Maintaining of existing surface water flows
- Sudden increase in flows

Maintenance / Cleaning

- Trash screen will require regular inspection and clearance
- Trash screen and outfall to be inspected after storm events
- Attenuation tanks to be cleaned by high flow jetting
- Silt/rock traps to be emptied to prevent culvert blockage

Use

- Trash screen will require regular inspection and clearance
- Trash screen and outfall to be inspected after storm events
- Attenuation tanks to be cleaned by high flow jetting
- Silt/rock traps to be emptied to prevent culvert blockage


Decommissioning / Demolition

- Requirement for services diversions in advance of works to install new culvert
- Potential for encountering unplotted services or private underground services
- access to be maintained to residential and commercial properties
- Presence of asbestos containing materials at Carreg Hir
- Presence of contaminated soils in areas of former industrial use (land at Penrhiwin)
- Maintaining of existing surface water flows
- Sudden increase in flows

NOTES

- ALL DIMENSIONS ARE IN MILLIMETRES UNLESS OTHERWISE NOTED.
- ALL LEVELS ARE IN METRES ABOVE ORDNANCE DATUM UNLESS OTHERWISE NOTED.

Description	Status	Revision	Drawn	Checked	Reviewed	Authorised	Issue Date
Description	Status	Revision	Drawn	Checked	Reviewed	Authorised	Issue Date
Description	Status	Revision	Drawn	Checked	Reviewed	Authorised	Issue Date
Description	Status	Revision	Drawn	Checked	Reviewed	Authorised	Issue Date
Description	Status	Revision	Drawn	Checked	Reviewed	Authorised	Issue Date
Description	Status	Revision	Drawn	Checked	Reviewed	Authorised	Issue Date
Description	Status	Revision	Drawn	Checked	Reviewed	Authorised	Issue Date
Description	Status	Revision	Drawn	Checked	Reviewed	Authorised	Issue Date

Drawing Suitability	Status
WORK IN PROGRESS	S0
 West Glamorgan House 12 Orchard Street Swansea West Glamorgan SA1 5AD Tel: +44 (0)1792 641172 Fax: +44 (0)1792 472019 www.atkingsglobal.com	
Client  NEATH PORT TALBOT COUNTY BOROUGH COUNCIL	

Project Title	GRANDISON BROOK
Drawing Title	JERSEY PARK BELOW GROUND ATTENUATION DRAINAGE DETAILS SHEET 2 OF 2
Drawing Number Project	NE05_001
Originator	ATK
Volume	GEN
Drawing Number Project	SWMWREC
Originator	DR
Volume	CD
Project Ref. No.	000315
Original Size	A1
Scale	AS SHOWN
Project Ref. No.	5192793
Sheet	of
Rev	P01.3