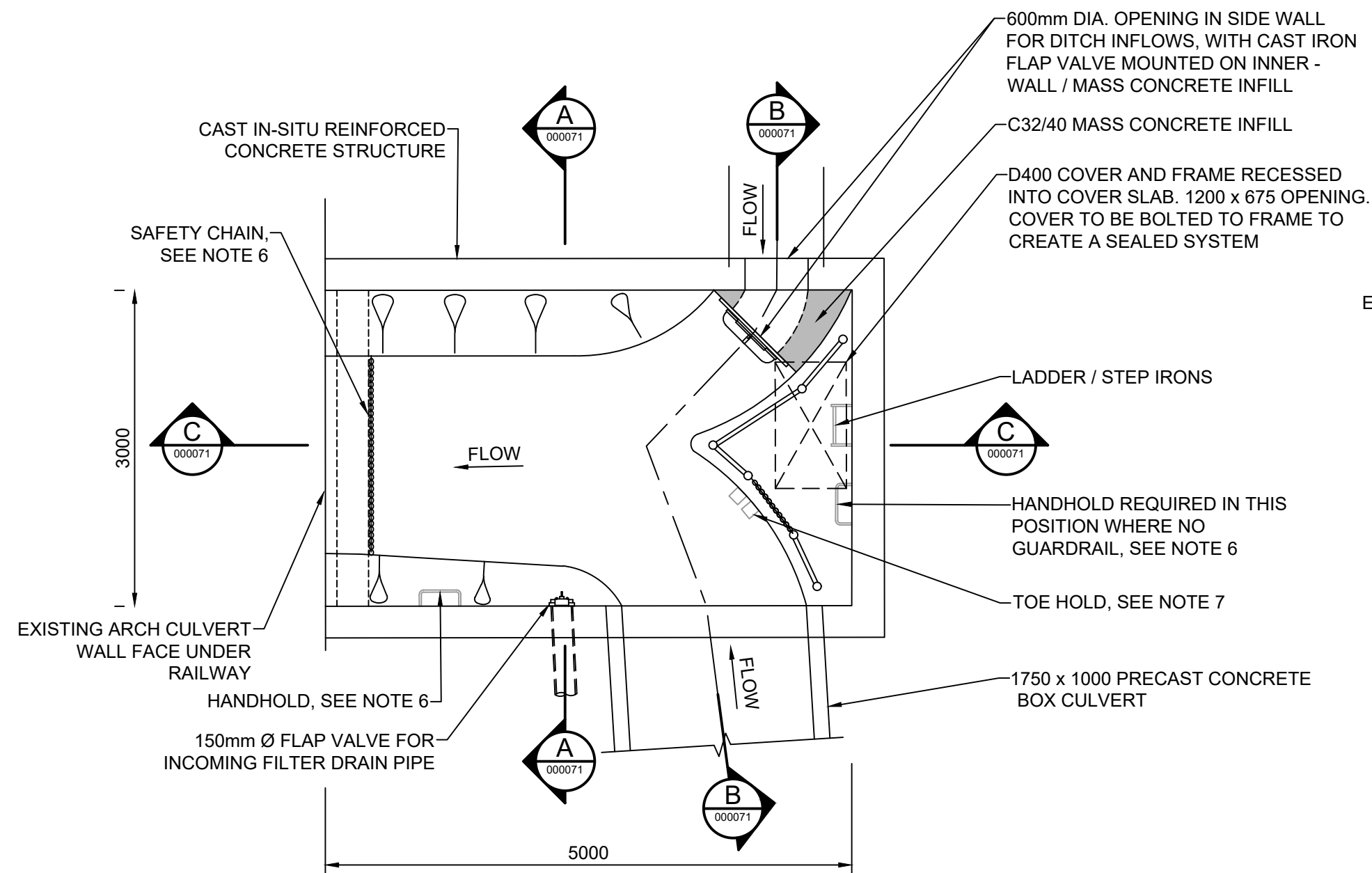
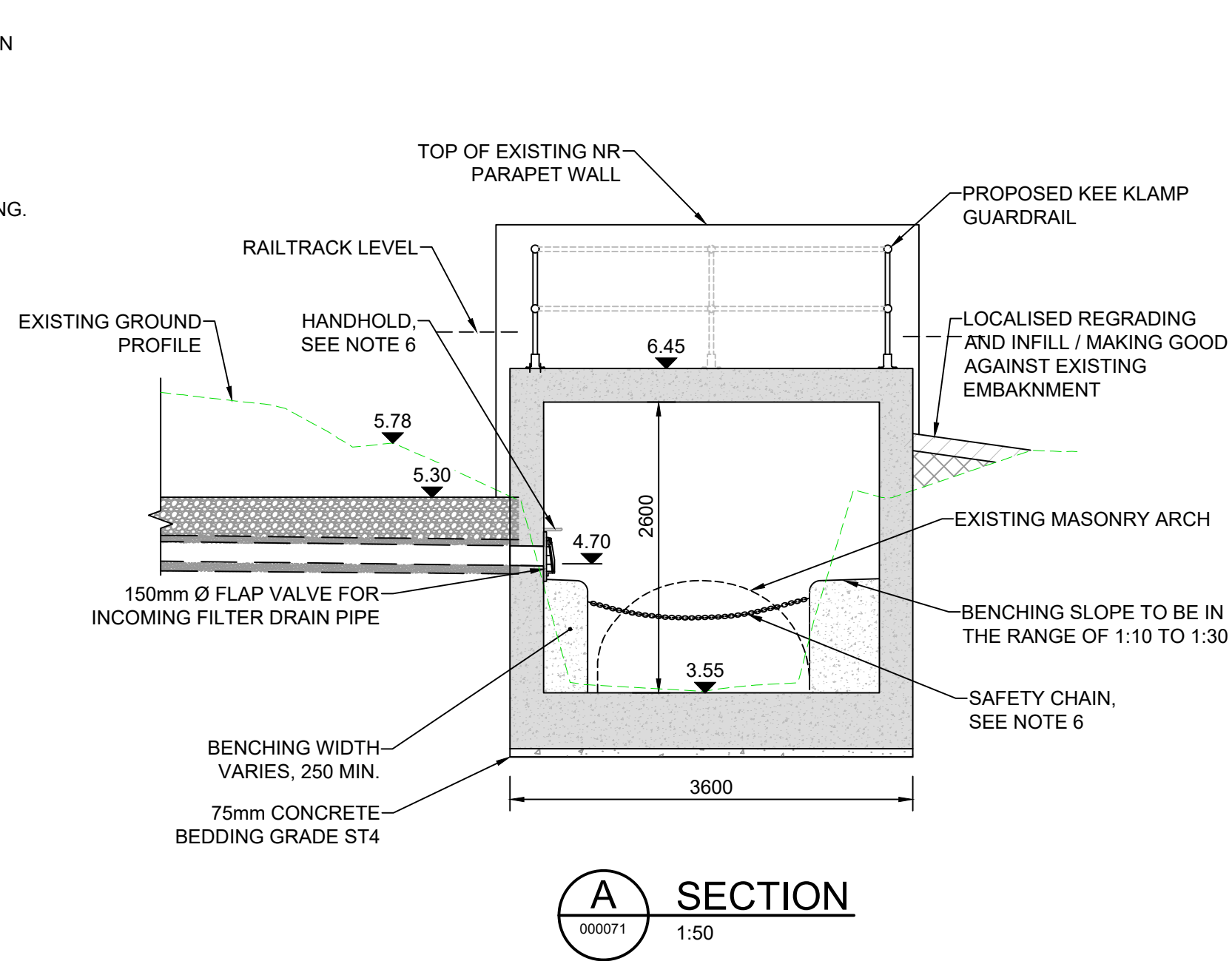


DO NOT SCALE

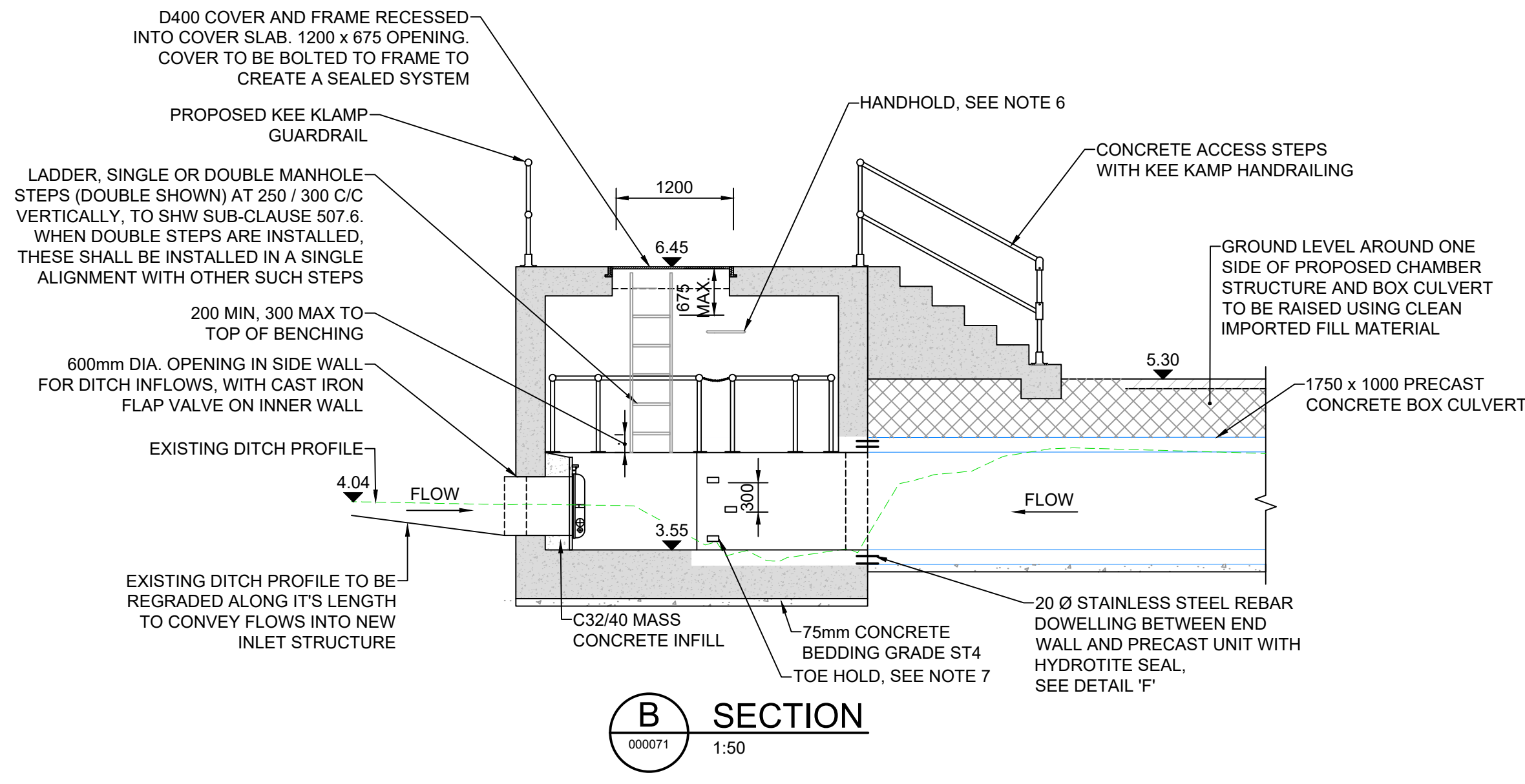
100
0 10
Millimetres



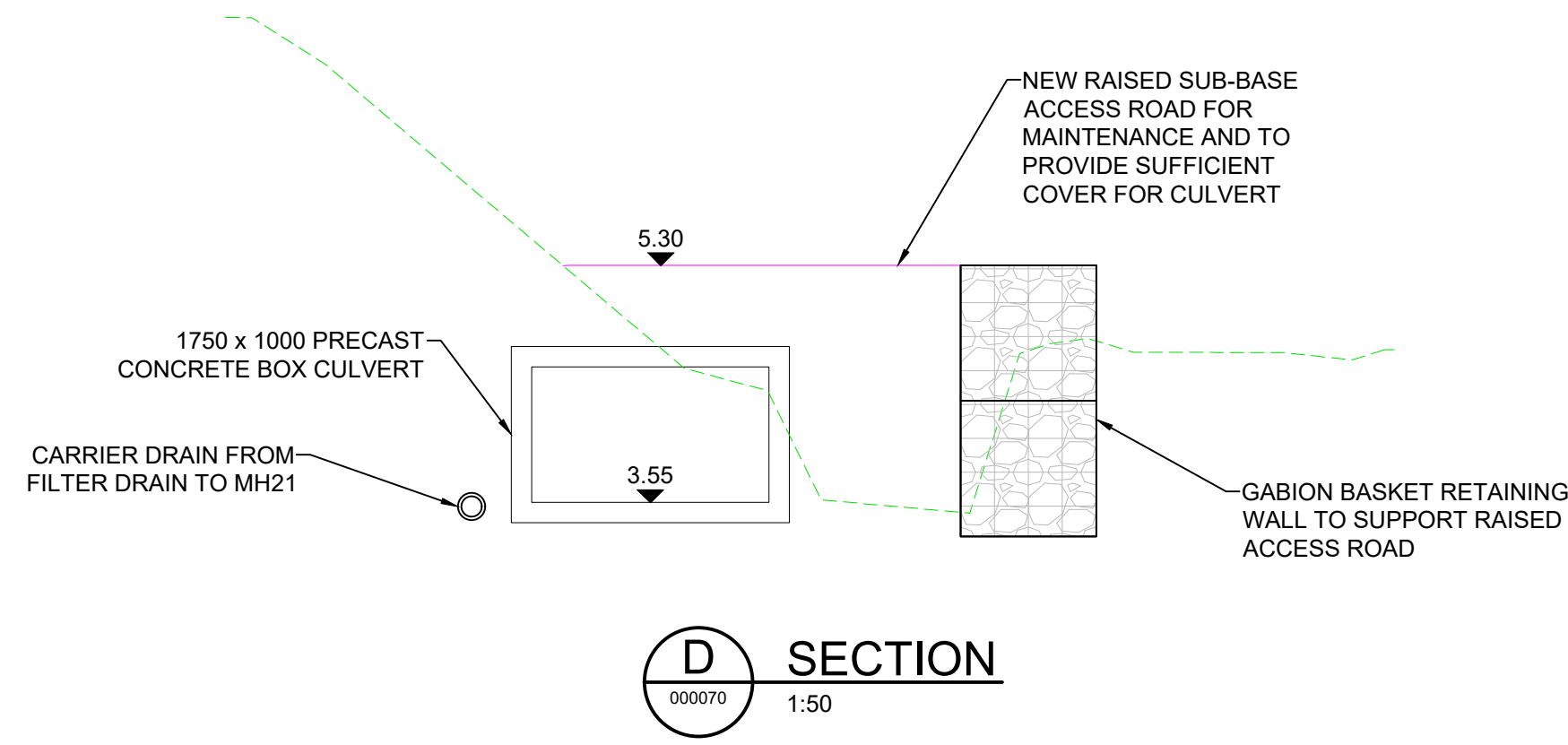
BESPOKE CHAMBER PLAN
(SW MH21)
1:50



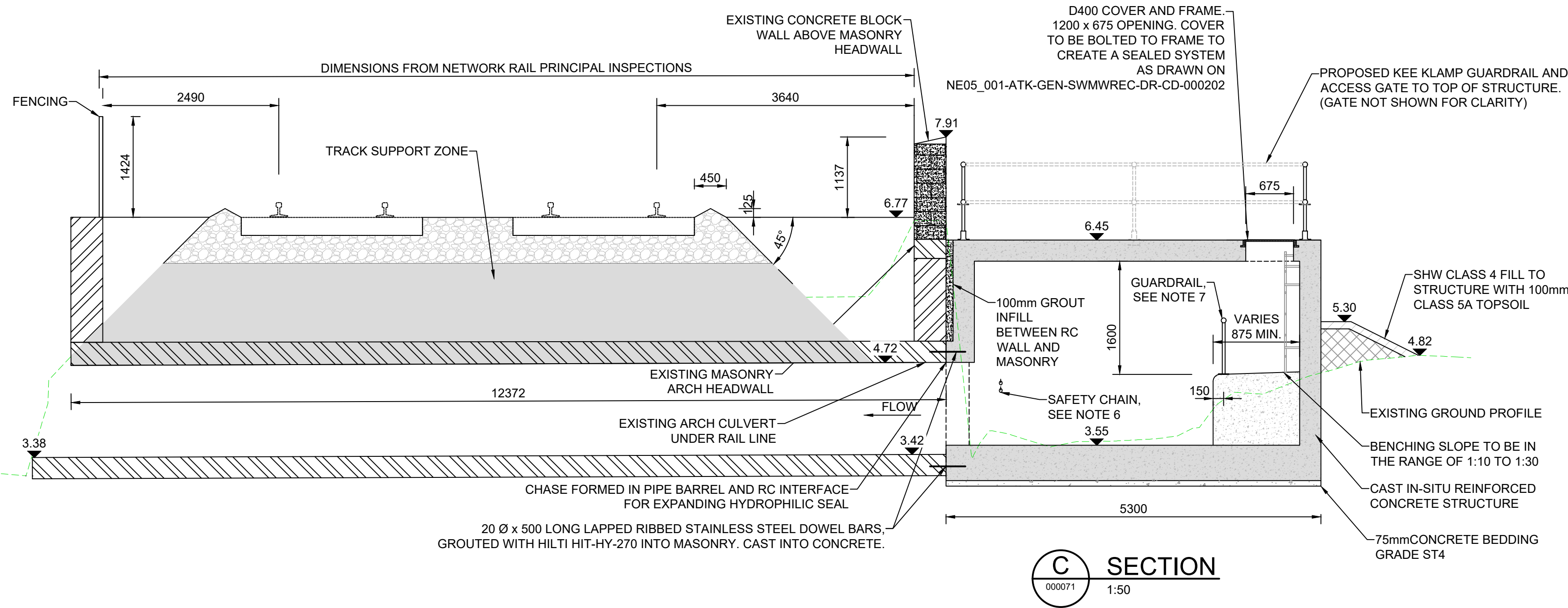
A SECTION
000071 1:50



B SECTION
000071 1:50



D SECTION
000070 1:50



C SECTION
000071 1:50

NOTES

1. ALL DIMENSIONS ARE IN MILLIMETRES UNLESS OTHERWISE NOTED.
2. ALL LEVELS ARE IN METRES ABOVE ORDNANCE DATUM UNLESS OTHERWISE NOTED.
3. ALL WASTE MATERIAL TO BE DISPOSED TO CONTRACTORS LICENSED TIP.
4. CHAMBER WALLS AND COVER SLAB TO BE CAST IN-SITU REINFORCED CONCRETE STRUCTURES TO BS EN 1917 AND BS 5911-3.
5. MORTAR TO BE DESIGNATION (i) TO SHW SERIES 2400.
6. FOR DETAILS OF LADDER, HANDHOLD AND SAFETY CHAIN SEE HCD DRAWING NUMBER F10.
7. FOR DETAILS OF GUARDRAIL AND TOE HOLD SEE HCD DRAWING NUMBER F28.
8. SEE SHW, SUB CLAUSE 507.7 REGARDING BACKFILLING / SURROUND TO CHAMBER.
9. ALL ST CONCRETE SHALL BE TO SHW, CLAUSE 2602.

Description						
Status	Revision	Drawn	Checked	Reviewed	Authorised	Issue Date
Description						
Status	Revision	Drawn	Checked	Reviewed	Authorised	Issue Date
Description						
Status	Revision	Drawn	Checked	Reviewed	Authorised	Issue Date
Description						
Status	Revision	Drawn	Checked	Reviewed	Authorised	Issue Date
Description						
Status	Revision	Drawn	Checked	Reviewed	Authorised	Issue Date
S0	P01.3	RM	---	---	---	02/03/25

Drawing Suitability		Status
WORK IN PROGRESS		S0
 West Glamorgan House 12 Orchard Street Swansea West Glamorgan SA1 5AD Tel: +44 (0)1792 641172 Fax: +44 (0)1792 472019 www.atkinsglobal.com		
Client  NEATH PORT TALBOT COUNTY BOROUGH COUNCIL		

SAFETY, HEALTH AND ENVIRONMENTAL INFORMATION	
In addition to the hazards/risks normally associated with the types of work detailed on this drawing, note the following significant residual risks (Reference shall also be made to the design hazard log).	
Construction <ul style="list-style-type: none">• Requirement for services diversions in advance of works to install new culvert• Potential for encountering unplotted services or private underground services• access to be maintained to residential and commercial properties• Presence of asbestos containing materials at Carreg Hir• Presence of contaminated soils in areas of former industrial use (land at Penrhiwlin)• Maintaining of existing surface water flows• Sudden increase in flows	
Maintenance / Cleaning <ul style="list-style-type: none">• Trash screen will require regular inspection and clearance• Trash screen and outfall to be inspected after storm events• Attenuation tanks to be cleaned by high flow jetting• Silt/rock traps to be emptied to prevent culvert blockage	
Use <ul style="list-style-type: none">• Trash screen will require regular inspection and clearance• Trash screen and outfall to be inspected after storm events• Attenuation tanks to be cleaned by high flow jetting• Silt/rock traps to be emptied to prevent culvert blockage	
Decommissioning / Demolition <ul style="list-style-type: none">• Requirement for services diversions in advance of works to install new culvert• Potential for encountering unplotted services or private underground services• access to be maintained to residential and commercial properties• Presence of asbestos containing materials at Carreg Hir• Presence of contaminated soils in areas of former industrial use (land at Penrhiwlin)• Maintaining of existing surface water flows• Sudden increase in flows	

Project Title	
GRANDISON BROOK	
Drawing Title	
SW MH21 PROPOSED DETAILS SHEET 1 OF 1	
Drawing Number	
NE05_001 - ATK - GEN -	
Project	
SWMWREC - DR - CD - 000071	
Location	
A1	
Scale	
AS SHOWN	
Project Ref. No.	
5192793	
Sheet	
1 of 1	
Rev.	
P01.3	