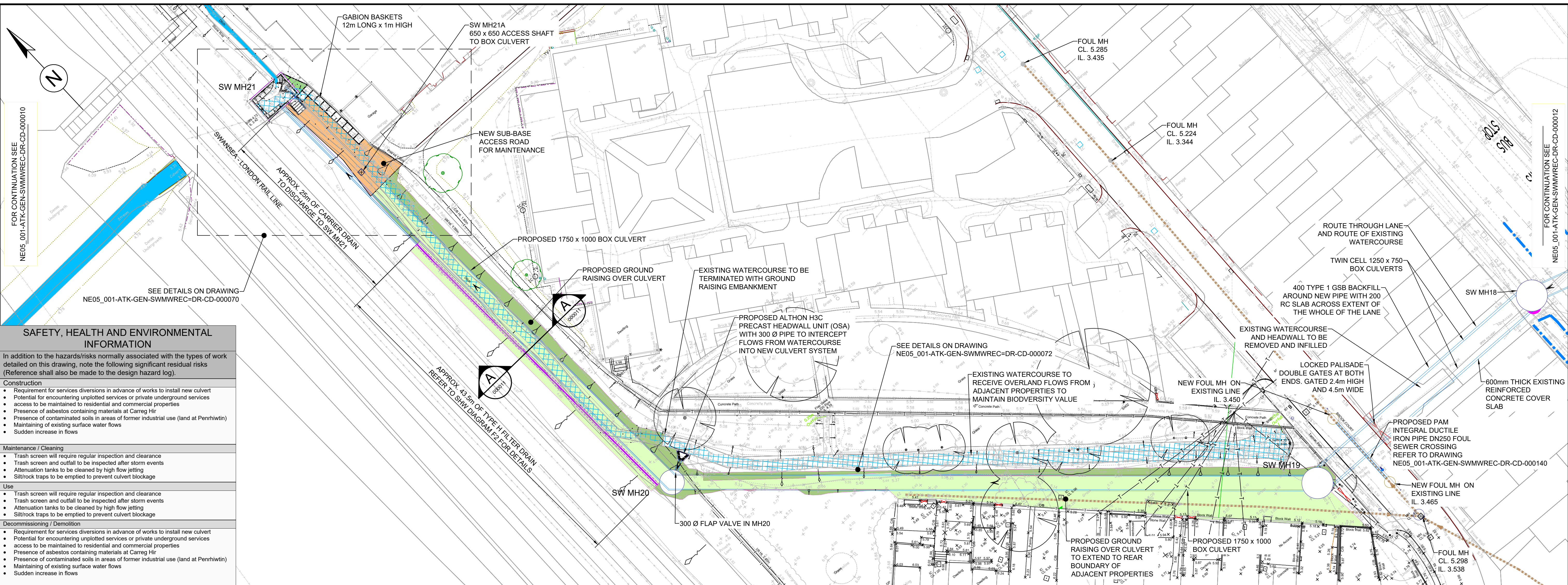
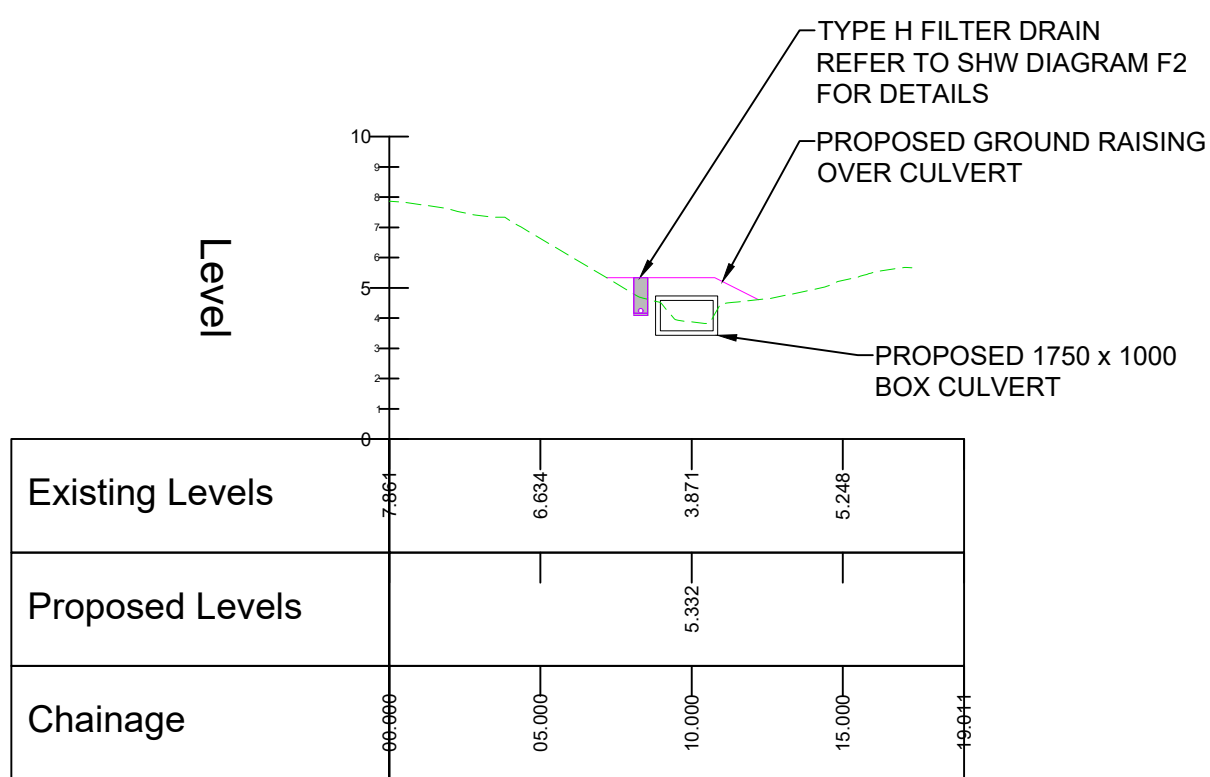


DO NOT SCALE

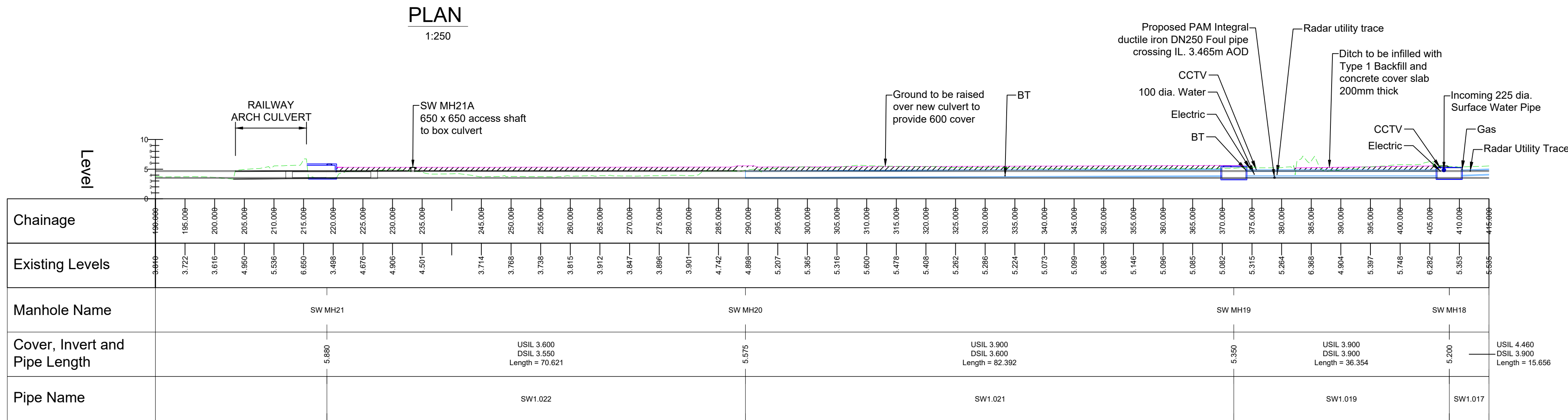
0 10 100
Millimetres



SAFETY, HEALTH AND ENVIRONMENTAL INFORMATION	
In addition to the hazards/risks normally associated with the types of work detailed on this drawing, note the following significant residual risks (Reference shall also be made to the design hazard log).	
Construction	<ul style="list-style-type: none">Requirement for services diversions in advance of works to install new culvertPotential for encountering unplotted services or private underground servicesaccess to be maintained to residential and commercial propertiesPresence of asbestos containing materials at Carreg HirPresence of contaminated soils in areas of former industrial use (land at Penrhwtin)Maintaining of existing surface water flowsSudden increase in flows
Maintenance / Cleaning	<ul style="list-style-type: none">Trash screen will require regular inspection and clearanceTrash screen and outfall to be inspected after storm eventsAttenuation tanks to be cleaned by high flow jettingSilt/rock traps to be emptied to prevent culvert blockage
Use	<ul style="list-style-type: none">Trash screen will require regular inspection and clearanceTrash screen and outfall to be inspected after storm eventsAttenuation tanks to be cleaned by high flow jettingSilt/rock traps to be emptied to prevent culvert blockage
Decommissioning / Demolition	<ul style="list-style-type: none">Requirement for services diversions in advance of works to install new culvertPotential for encountering unplotted services or private underground servicesaccess to be maintained to residential and commercial propertiesPresence of asbestos containing materials at Carreg HirPresence of contaminated soils in areas of former industrial use (land at Penrhwtin)Maintaining of existing surface water flowsSudden increase in flows



TYPICAL CROSS SECTION
1:250



CULVERT LONG SECTION (SW MH 21 - SW MH 18)
1:500

NOTES

- ALL DIMENSIONS ARE IN MILLIMETRES UNLESS OTHERWISE NOTED.
- ALL LEVELS ARE IN METRES ABOVE ORDNANCE DATUM UNLESS OTHERWISE NOTED.

SERVICES LEGEND

Neath Port Talbot Borough Council - Drainage	GTC
Neath Port Talbot Borough Council - Gully	Western Power Distribution
Neath Port Talbot Borough Council - Street Light	Western Power Distribution - Overhead
Neath Port Talbot Borough Council - Street Lighting	Western Power Distribution - Substation
Neath Port Talbot Borough Council - Electric Street Furniture	Radar Trace
Dwr Cymru Welsh Water - Sewerage	Ysgol Carreg Hir Surface Water - Drainage
Dwr Cymru Welsh Water - Water	Ysgol Carreg Hir Surface Water - Filter Drain
Openreach - British Telecommunications	Ysgol Carreg Hir Foul Sewer
Openreach - British Telecommunications - Overhead	Network Rail asset
Virgin Media	
Vodafone	
Wales and West Utilities	

Description	Status	Revision	Drawn	Checked	Reviewed	Authorised	Issue Date
	S0	P01.3	AJ	---	---	---	07/04/25

Drawing Suitability	Status	Project Title
WORK IN PROGRESS	S0	GRANDISON BROOK

SNC-LAVALIN ATKINS Member of the SNC-Lavalin Group Copyright © SNC Lavalin (2019)	West Glamorgan House 12 Orchard Street Swansea West Glamorgan SA1 5AD Tel: +44 (0)1792 641172 Fax: +44 (0)1792 472019 www.atkinsglobal.com
--	---

Client	NEATH PORT TALBOT COUNTY BOROUGH COUNCIL
--------	--

Drawing Number	Project	Originator	Volume
NE05_001	- ATK - GEN -		

Drawing Title	Location	Type	Role	Number
PLAN AND LONG SECTION SHEET 2				

Original Size: A1	Scale: AS SHOWN	Project Ref. No: 5192793	Sheet: 2 of 8	Rev: P01.3
-------------------	-----------------	--------------------------	---------------	------------