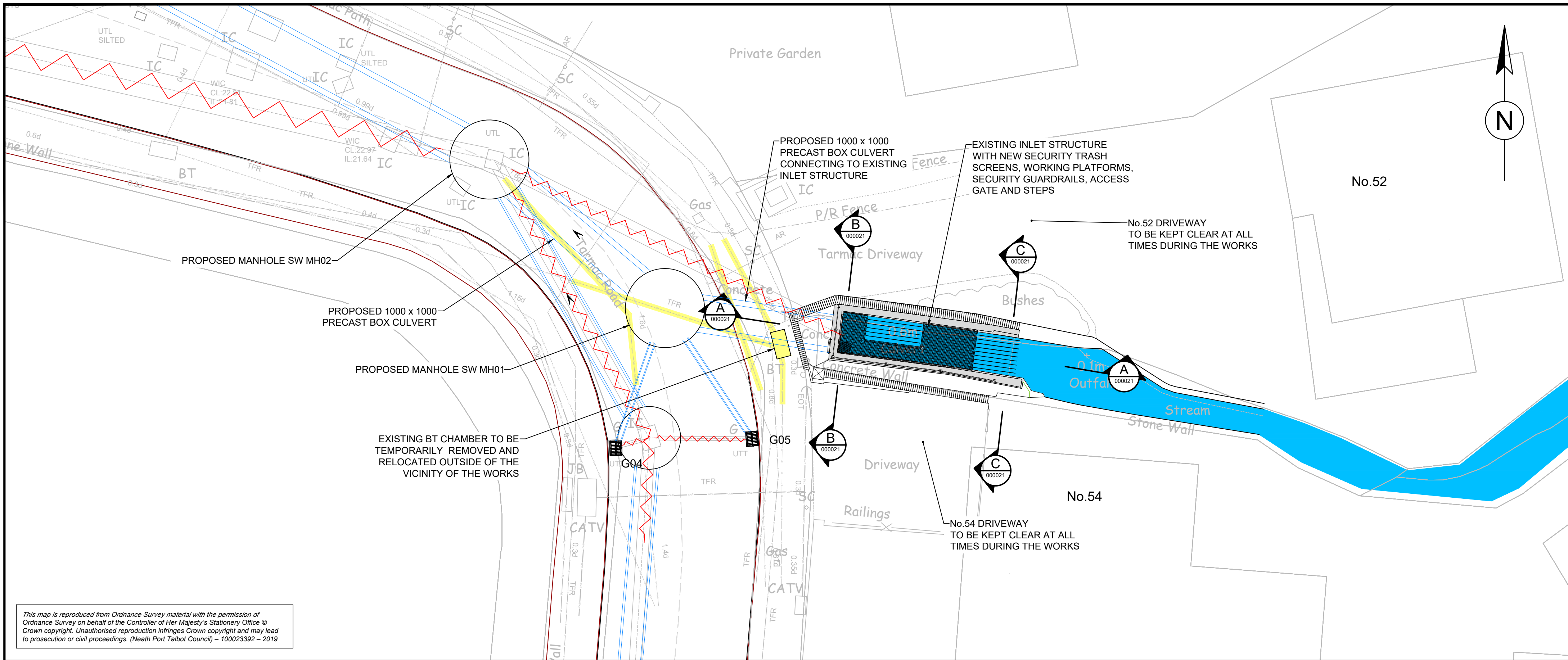


DO NOT SCALE

100
0 10
Millimetres



INLET STRUCTURE PLAN

1:100

This map is reproduced from Ordnance Survey material with the permission of Ordnance Survey on behalf of the Controller of Her Majesty's Stationary Office © Crown copyright. Unauthorised reproduction infringes Crown copyright and may lead to prosecution or civil proceedings. (Neath Port Talbot Council) - 100023392 - 2019

NOTES

- ALL DIMENSIONS ARE IN MILLIMETRES UNLESS OTHERWISE NOTED.
- ALL LEVELS ARE IN METRES ABOVE ORDNANCE DATUM UNLESS OTHERWISE NOTED.
- ALL WASTE MATERIAL TO BE DISPOSED TO CONTRACTORS LICENSED TIP.
- FOR EXISTING UTILITY INFORMATION REFER TO DRAWING NUMBER NE05_001-ATK-GEN-SWMWREC-DR-CD-000070.
- FOR PROPOSED UTILITY DIVERSION INFORMATION REFER TO DRAWING NUMBERS NE06_001-ATK-GEN-SWMWREC-DR-CD-0000xx & 0000xx.
- ALL RIGID PIPES CONNECTING TO MANHOLES AND STRUCTURES TO HAVE A MINIMUM OF 1 No. ROCKER PIPE AND 1 No. SHORT LENGTH PIPE. EFFECTIVE LENGTH TO BE AS FOLLOWS:
150 - 600 DIA = 600 LENGTH
600 - 750 DIA = 1000 LENGTH
OVER 750 DIA = 1250 LENGTH



KEY

- Proposed culvert
- Proposed manhole
- Services to be diverted
- Existing surface water culvert to be removed

SERVICES LEGEND

- Dwr Cymru Welsh Water - Sewerage
- Dwr Cymru Welsh Water - Water
- ESP Utilities Group
- GTC
- Instalcom - [CenturyLink, Global Crossing, Fibernet & Fiberspan]
- Neath Port Talbot Borough Council - Drainage
- Neath Port Talbot Borough Council - Electric Street Furniture
- Neath Port Talbot Borough Council - Gully
- Neath Port Talbot Borough Council - Street Light
- Network Rail
- Openreach - British Telecommunications
- Openreach - British Telecommunications - Overhead
- Virgin Media
- Vodafone
- Wales and West Utilities
- Western Power Distribution
- Western Power Distribution - Overhead
- Western Power Distribution - Substation
- Ysgol Carreg Hir Surface Water Drainage
- Ysgol Carreg Hir Surface Water Filter Drain
- Ysgol Carreg Hir Foul Sewer

Description						
Status	Revision	Drawn	Checked	Reviewed	Authorised	Issue Date
Description						
Status	Revision	Drawn	Checked	Reviewed	Authorised	Issue Date
Description						
Status	Revision	Drawn	Checked	Reviewed	Authorised	Issue Date
Description						
Status	Revision	Drawn	Checked	Reviewed	Authorised	Issue Date
S0	P01.2	ME	---	---	---	07/04/25

Drawing Suitability		Status	Project Title
WORK IN PROGRESS		S0	GRANDISON BROOK
 Member of the SNC-Lavalin Group Copyright © SNC Lavalin (2019)		West Glamorgan House 12 Orchard Street Swansea West Glamorgan SA1 5AD Tel: +44 (0)1792 641172 Fax: +44 (0)1792 472019 www.atkinsglobal.com	
 NEATH PORT TALBOT COUNTY BOROUGH COUNCIL		Drawing Number Project NE05_001 - ATK - GEN - SWMWREC - DR - CD - 000020 Location Original Size: A1 Scale: AS SHOWN Project Ref. No: 5192793 Sheet: 1 of 3 Rev: P01.2	

SAFETY, HEALTH AND ENVIRONMENTAL INFORMATION

In addition to the hazards/risks normally associated with the types of work detailed on this drawing, note the following significant residual risks (Reference shall also be made to the design hazard log).

Construction
(Enter "None" if applicable)

Maintenance / Cleaning
(Enter "None" if applicable)

Use
(Enter "None" if applicable)

Decommissioning / Demolition
(Enter "None" if applicable)