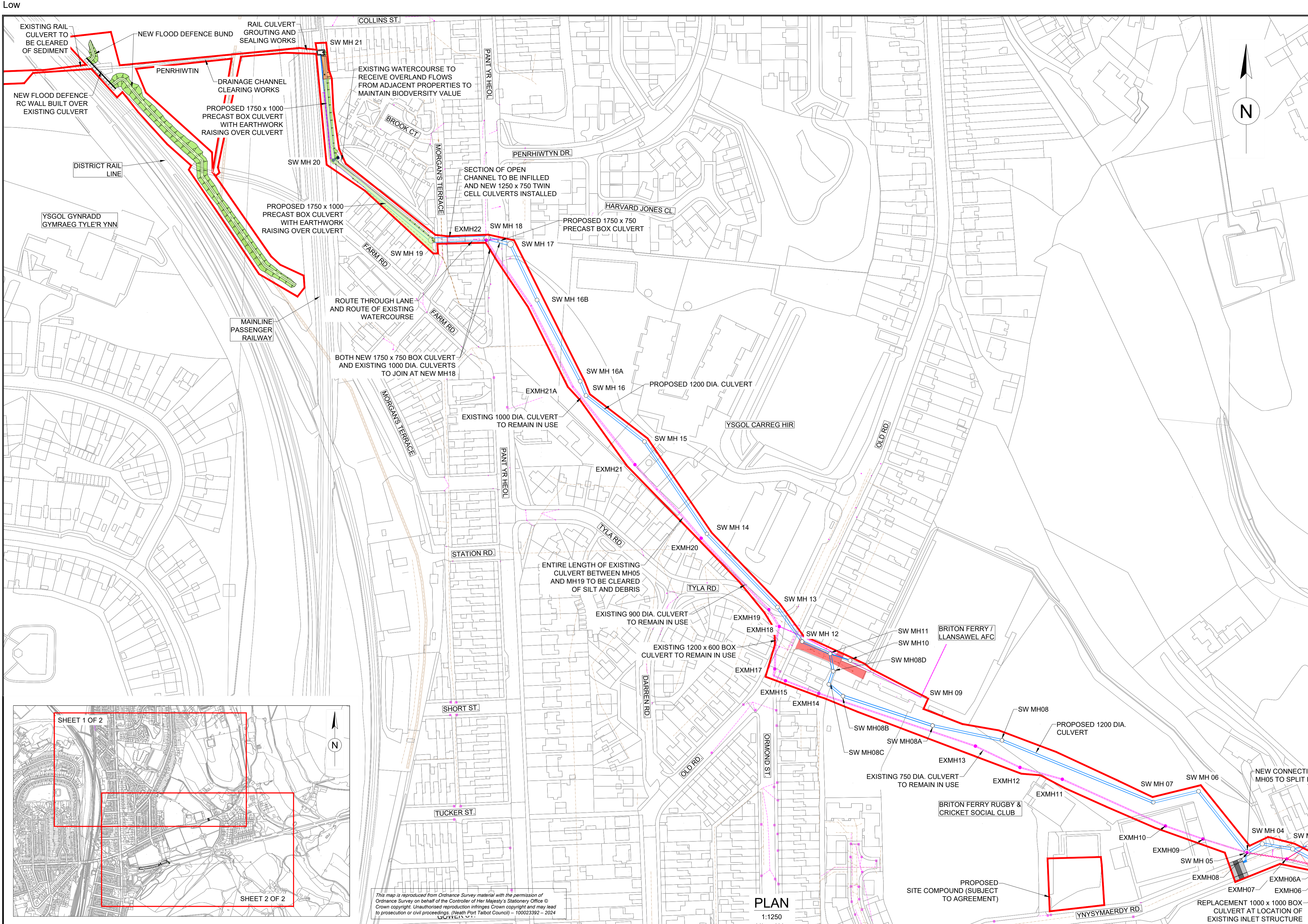
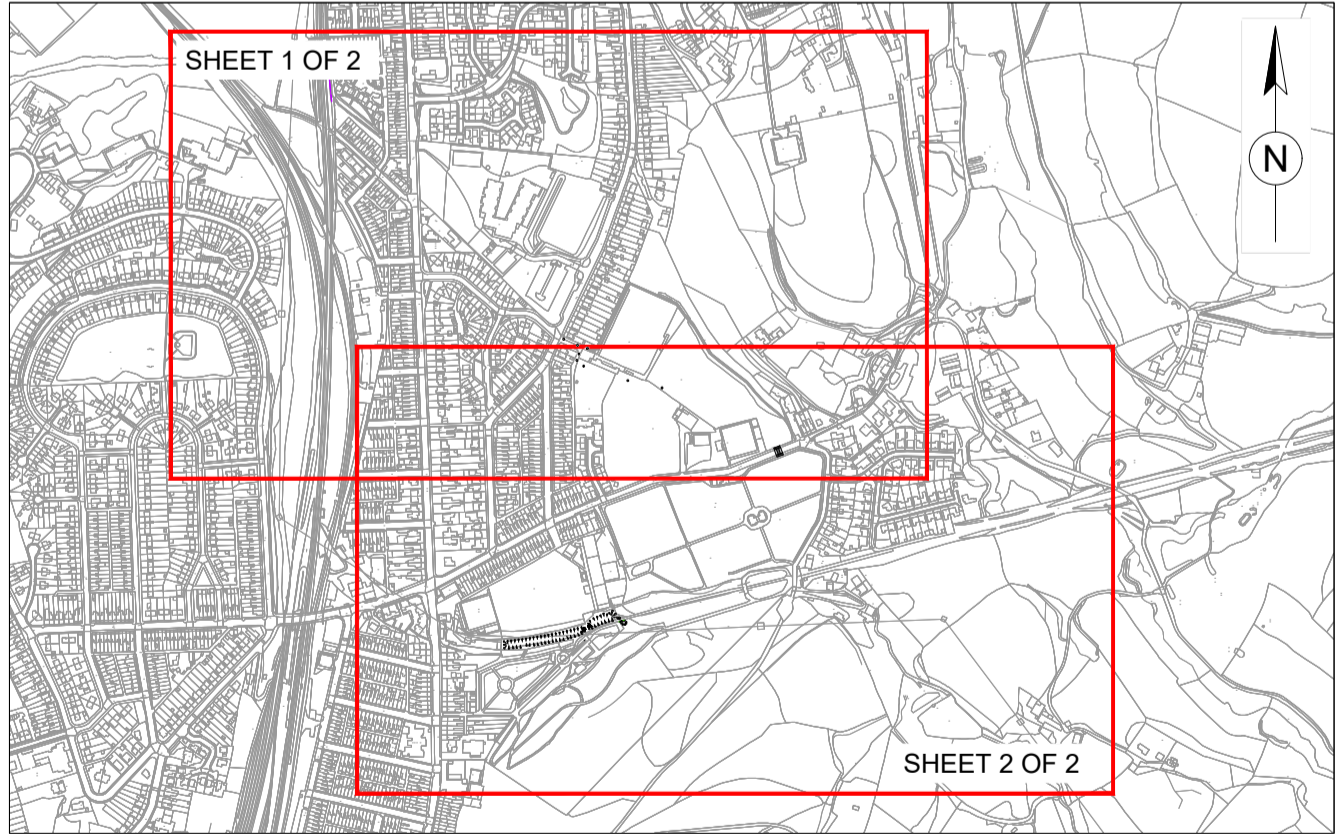


DO NOT SCALE

0 10 100
Millimetres



SAFETY, HEALTH AND ENVIRONMENTAL INFORMATION	
In addition to the hazards/risks normally associated with the types of work detailed on this drawing, note the following significant residual risks (Reference shall also be made to the design hazard log).	
Construction	<ul style="list-style-type: none">Requirement for services diversions in advance of works to install new culvertPotential for encountering unplotted services or private underground servicesaccess to be maintained to residential and commercial propertiesPresence of asbestos containing materials at Carreg HirPresence of contaminated soils in areas of former industrial use (land at Penrhiwlin)Maintaining of existing surface water flowsSudden increase in flows
Maintenance / Cleaning	<ul style="list-style-type: none">Trash screen will require regular inspection and clearanceTrash screen and outfall to be inspected after storm eventsAttenuation tanks to be cleaned by high flow jettingSilt/rock traps to be emptied to prevent culvert blockage
Use	<ul style="list-style-type: none">Trash screen will require regular inspection and clearanceTrash screen and outfall to be inspected after storm eventsAttenuation tanks to be cleaned by high flow jettingSilt/rock traps to be emptied to prevent culvert blockage
Decommissioning / Demolition	<ul style="list-style-type: none">Requirement for services diversions in advance of works to install new culvertPotential for encountering unplotted services or private underground servicesaccess to be maintained to residential and commercial propertiesPresence of asbestos containing materials at Carreg HirPresence of contaminated soils in areas of former industrial use (land at Penrhiwlin)Maintaining of existing surface water flowsSudden increase in flows



This map is reproduced from Ordnance Survey material with the permission of Ordnance Survey on behalf of the Controller of Her Majesty's Stationery Office © Crown copyright. Unauthorised reproduction infringes Crown copyright and may lead to prosecution or civil proceedings. (Neath Port Talbot Council) - 100023392 - 2024

PLAN
1:1250

NOTES

- ALL DIMENSIONS ARE IN MILLIMETRES UNLESS OTHERWISE NOTED.
- ALL LEVELS ARE IN METRES ABOVE ORDNANCE DATUM UNLESS OTHERWISE NOTED.


DRAINAGE SERVICES LEGEND

- Neath Port Talbot Borough Council - Drainage
- Neath Port Talbot Borough Council - Gully
- Dwr Cymru Welsh Water - Sewerage
- Dwr Cymru Welsh Water - Water

KEY

PLANNING BOUNDARY, BASED ON SITE ACCESS ROUTES AND SITE COMPOUND

Description						
Status	Revision	Drawn	Checked	Reviewed	Authorised	Issue Date
Description						
Status	Revision	Drawn	Checked	Reviewed	Authorised	Issue Date
Description						
Status	Revision	Drawn	Checked	Reviewed	Authorised	Issue Date
Description						
Status	Revision	Drawn	Checked	Reviewed	Authorised	Issue Date
S0	P01.3	ME	---	---	---	07/04/25

Drawing Suitability		Status	Project Title
WORK IN PROGRESS		S0	GRANDISON BROOK
 Member of the SNC-Lavalin Group Copyright © SNC Lavalin (2019)		West Glamorgan House 12 Orchard Street Swansea West Glamorgan SA1 5AD Tel: +44 (0)1792 641172 Fax: +44 (0)1792 472019 www.atkinsglobal.com	
 NEATH PORT TALBOT COUNTY BOROUGH COUNCIL		Client	

Drawing Title		Drawing Number	
PROPOSED SCHEME OVERVIEW SHEET 1 OF 2		NE05_001 - ATK - GEN - SWMWREC - DR - CD - 000001	
Location		Originator	
Original Size: A1		Volume	
Scale: 1:1250		Project Ref. No: 5192793	
Project Ref. No: 5192793		Sheet: 1 of 2	
Rev: P01.3		Rev: P01.3	