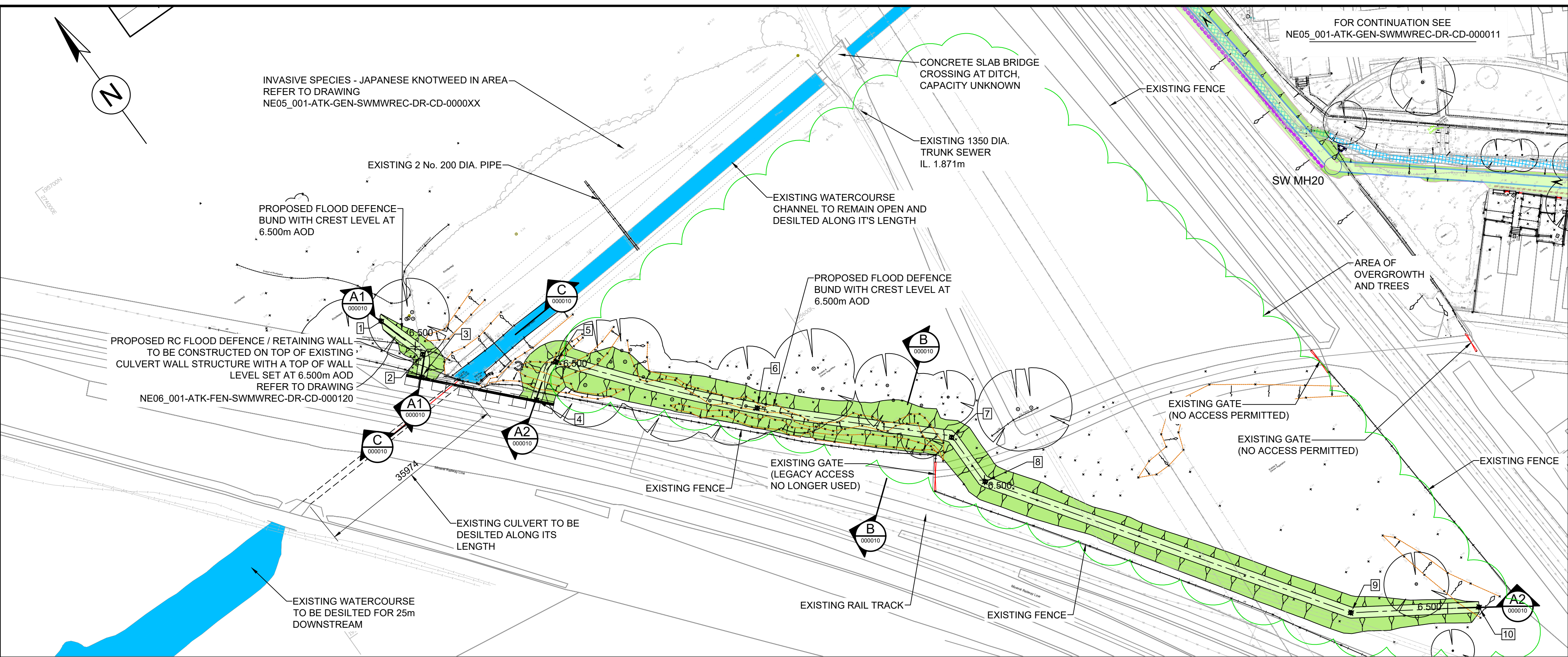


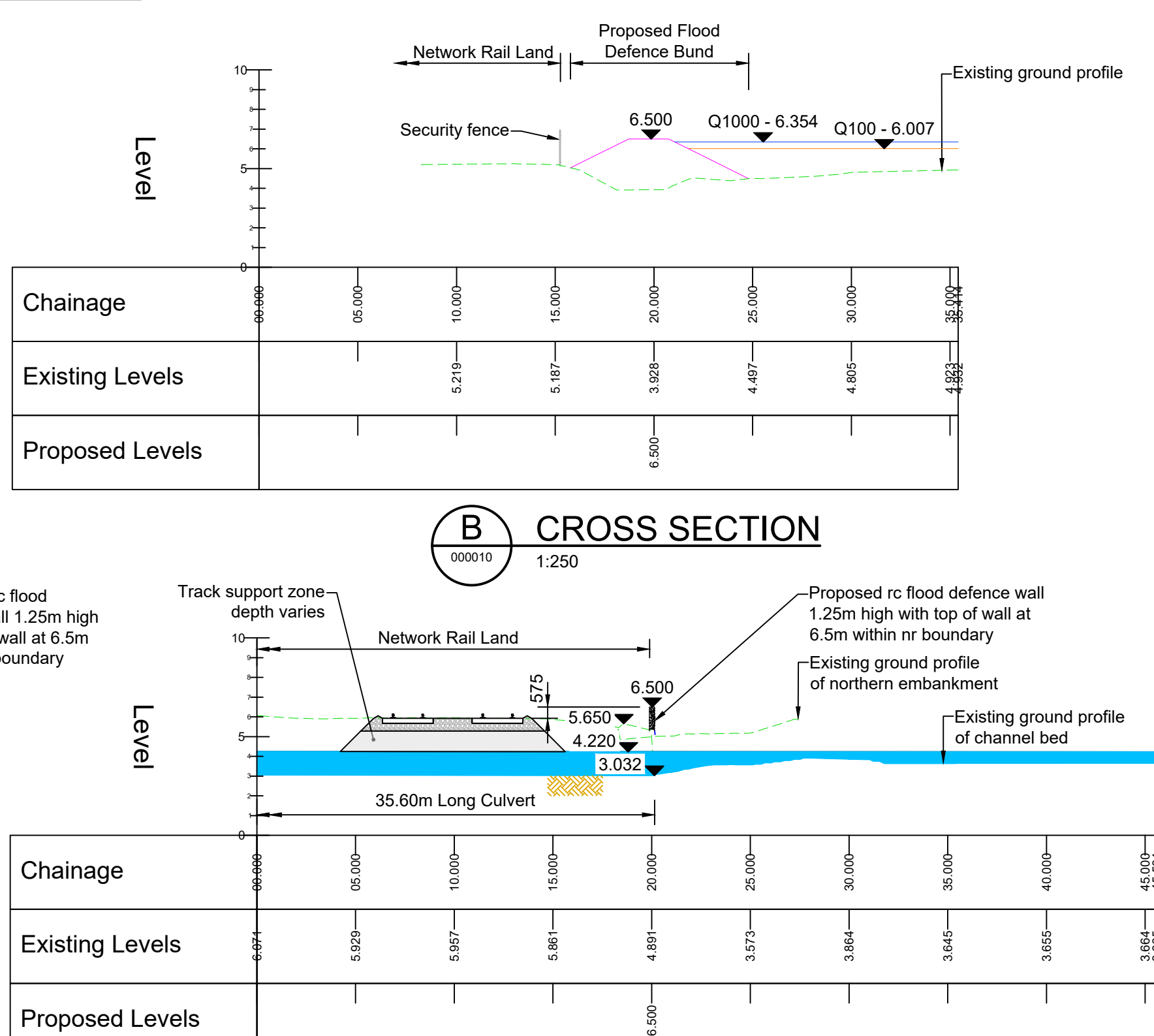
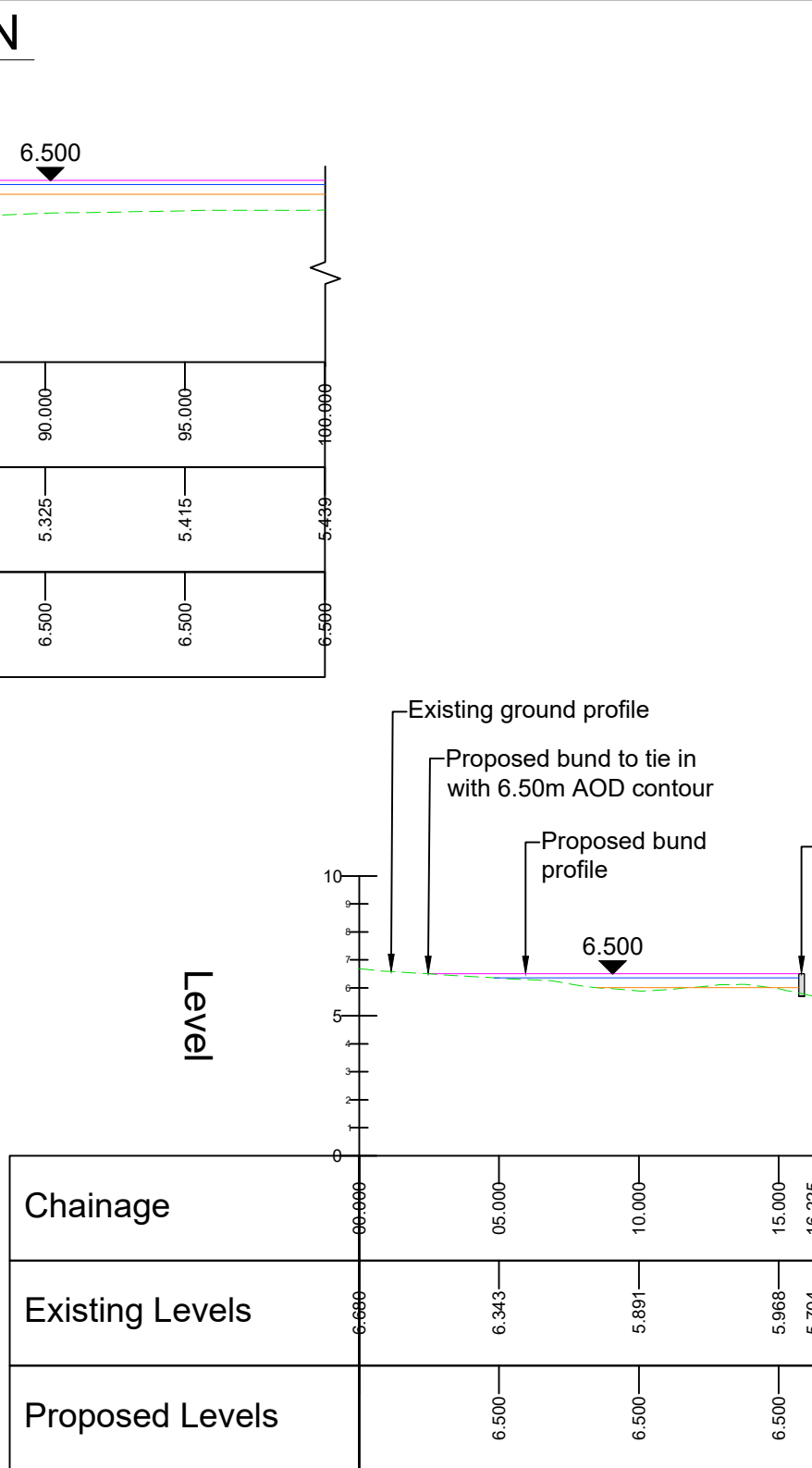
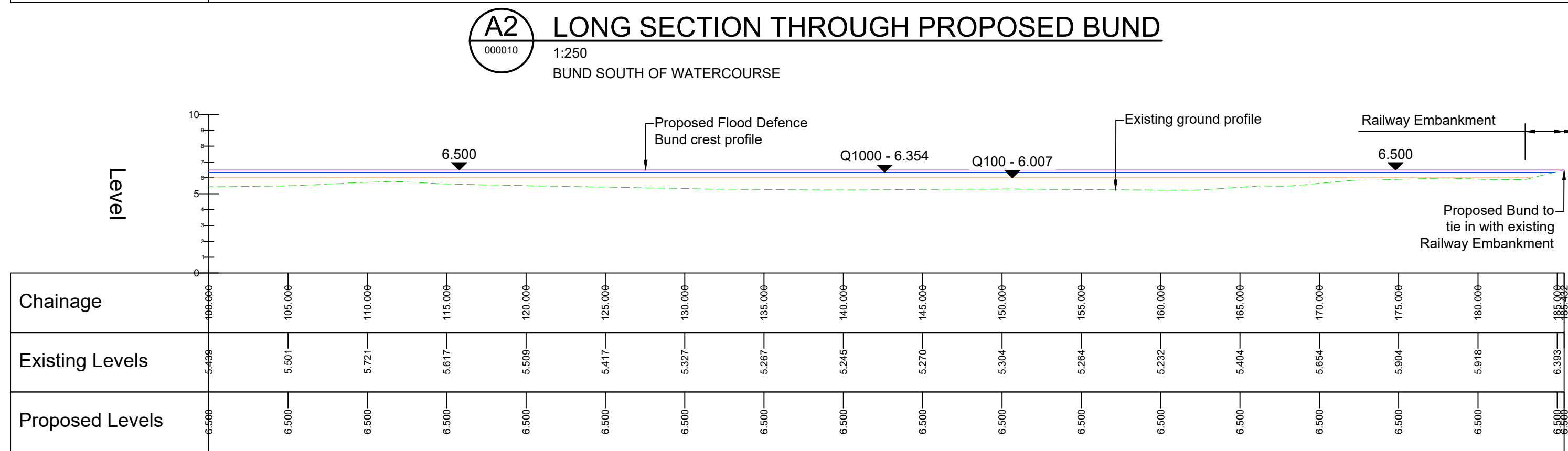
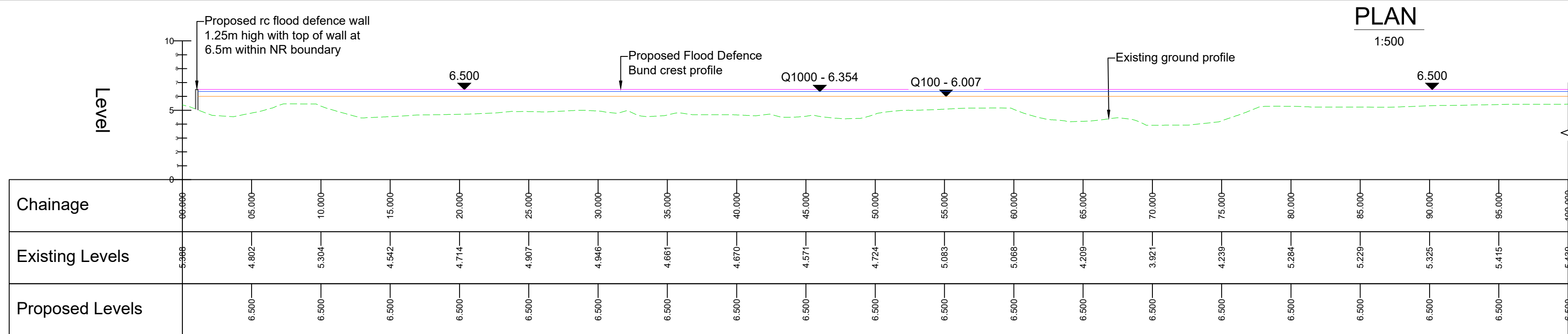
DO NOT SCALE

100  
0 10  
Millimetres



SETTING OUT INFORMATION		
POINT NUMBER	EASTING	NORTHING
1	274038.199	195644.207
2	274040.913	195634.864
3	274038.325	195631.570
4	274053.111	195616.050
5	274060.073	195619.617
6	274085.330	195591.518
7	274111.359	195566.619
8	274111.714	195556.464
9	274152.658	195498.243
10	274172.410	195485.563

SAFETY, HEALTH AND ENVIRONMENTAL INFORMATION	
In addition to the hazards/risks normally associated with the types of work detailed on this drawing, note the following significant residual risks (Reference shall also be made to the design hazard log).	
<b>Construction</b> <ul style="list-style-type: none"><li>Requirement for services diversions in advance of works to install new culvert</li><li>Potential for encountering unplotted services or private underground services</li><li>access to be maintained to residential and commercial properties</li><li>Presence of asbestos containing materials at Carreg Hir</li><li>Presence of contaminated soils in areas of former industrial use (land at Penhiwlin)</li><li>Maintaining of existing surface water flows</li><li>Sudden increase in flows</li></ul>	
<b>Maintenance / Cleaning</b> <ul style="list-style-type: none"><li>Trash screen will require regular inspection and clearance</li><li>Trash screen and outfall to be inspected after storm events</li><li>Attenuation tanks to be cleaned by high flow jetting</li><li>Silt/rock traps to be emptied to prevent culvert blockage</li></ul>	
<b>Use</b> <ul style="list-style-type: none"><li>Trash screen will require regular inspection and clearance</li><li>Trash screen and outfall to be inspected after storm events</li><li>Attenuation tanks to be cleaned by high flow jetting</li><li>Silt/rock traps to be emptied to prevent culvert blockage</li></ul>	
<b>Decommissioning / Demolition</b> <ul style="list-style-type: none"><li>Requirement for services diversions in advance of works to install new culvert</li><li>Potential for encountering unplotted services or private underground services</li><li>access to be maintained to residential and commercial properties</li><li>Presence of asbestos containing materials at Carreg Hir</li><li>Presence of contaminated soils in areas of former industrial use (land at Penhiwlin)</li><li>Maintaining of existing surface water flows</li><li>Sudden increase in flows</li></ul>	



- NOTES
- ALL DIMENSIONS ARE IN MILLIMETRES UNLESS OTHERWISE NOTED.
  - ALL LEVELS ARE IN METRES ABOVE ORDNANCE DATUM UNLESS OTHERWISE NOTED.
  - INVASIVE SPECIES, REFER TO DRAWING NE05\_001-ATK-GEN-SWMWREC-DR-CD-0000XX
  - BUND DETAILS AS DRAWING NE06\_001-ATK-FEN-SWMWREC-DR-CD-0000201

SAFETY, HEALTH AND ENVIRONMENTAL INFORMATION	
In addition to the hazards/risks normally associated with the types of work detailed on this drawing, note the following significant residual risks (Reference shall also be made to the design hazard log).	
<b>Construction</b> (Enter "None" if applicable)	
<b>Maintenance / Cleaning</b> (Enter "None" if applicable)	
<b>Use</b> (Enter "None" if applicable)	
<b>Decommissioning / Demolition</b> (Enter "None" if applicable)	

SERVICES LEGEND	
----- Neath Port Talbot Borough Council - Drainage	----- GTC
--- Neath Port Talbot Borough Council - Gully	--- Western Power Distribution
--- Neath Port Talbot Borough Council - Street Light	--- Western Power Distribution - Overhead
--- Neath Port Talbot Borough Council - Street Lighting	--- Western Power Distribution - Substation
--- Neath Port Talbot Borough Council - Electric Street Furniture	--- Radar Trace
--- Dwr Cymru Welsh Water - Sewerage	--- Ysgol Carreg Hir Surface Water - Drainage
--- Dwr Cymru Welsh Water - Water	--- Ysgol Carreg Hir Surface Water - Filter Drain
--- Openreach - British Telecommunications	--- Ysgol Carreg Hir Foul Sewer
--- Openreach - British Telecommunications - Overhead	--- Network Rail asset
--- Virgin Media	
--- Vodafone	
--- Wales and West Utilities	

Description						
Status	Revision	Drawn	Checked	Reviewed	Authorised	Issue Date
Description						
Status	Revision	Drawn	Checked	Reviewed	Authorised	Issue Date
Description						
Status	Revision	Drawn	Checked	Reviewed	Authorised	Issue Date
Description						
Status	Revision	Drawn	Checked	Reviewed	Authorised	Issue Date
S0	P01.2	AJ	---	---	---	07/04/25

Drawing Suitability		Status	Project Title
WORK IN PROGRESS		S0	GRANDISON BROOK
<b>SNC • LAVALIN</b> <b>ATKINS</b> Member of the SNC-Lavalin Group Copyright © SNC Lavalin (2019)		West Glamorgan House 12 Orchard Street Swansea West Glamorgan SA1 5AD Tel: +44 (0)1792 641172 Fax: +44 (0)1792 472019 www.atkinsglobal.com	
Client Neath Port Talbot County Borough Council		Drawing Number Project NE05_001 - ATK - GEN - SWMWREC - DR - CD - 000010 Location A1 Scale AS SHOWN Project Ref. No. 5192793 Sheet 1 of 8 Rev. P01.2	